

 **DOMUS**

WINNING THE FUTURE THROUGH INNOVATION

INTERACTIVE
CATALOGUE



Enjoy your own
professional laundry.

HEAVY PROFESSIONAL LAUNDRY

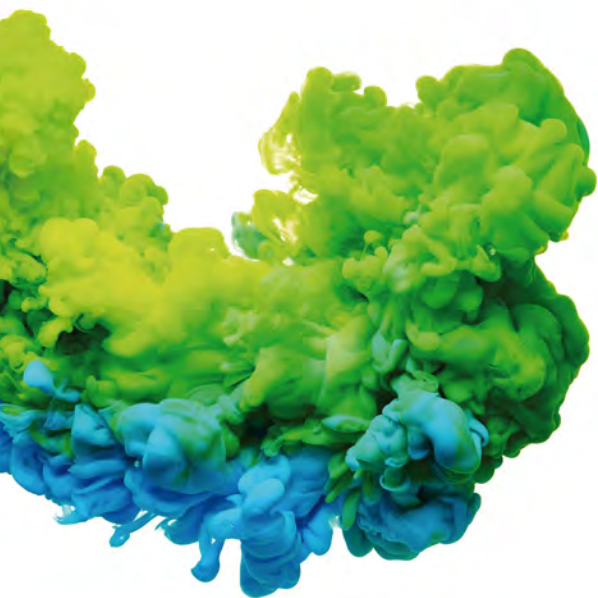
ECOVOLUTION
by **DOMUS**

Heavy Professional Laundry

Heavy Professional Laundry, specifically designed for your own business. A range tailored to meet the needs of your professional activity.

Heavy Professional Laundry is DOMUS' answer to the needs of a different client. A customer that demands equally robust, programmable, efficient and environmentally friendly machines, like the industrial models. The machines offer identical benefits but with greater versatility, a more manageable size and a more affordable price. Perfectly equipped to give you a quality, fast, flexible and economic service. Just the one you need.

Welcome to Heavy Professional Laundry.





HPW - HEAVY PROFESSIONAL WASHERS | G FACTOR 450

CONTROL TYPE	HEATING	CAPACITY			
		8 kg		10 kg	
TOUCH II Programmable Control	Electric - HW	Valve HPW-8 V TOUCH II	Pump HPW-8 P TOUCH II	Valve HPW-10 V TOUCH II	Pump HPW-10 P TOUCH II



HPD - HEAVY PROFESSIONAL TUMBLE DRYERS

CONTROL TYPE	HEATING	CAPACITY	
		8 kg	10 kg
TOUCH II Programmable Control	Electric	HPD-8 TOUCH II E	HPD-10 TOUCH II E
	Gas	HPD-8 TOUCH II G	HPD-10 TOUCH II G
ELECTRONIC CTRL M	Electric	HPD-8 M E	HPD-10 M E
	Gas	HPD-8 M G	HPD-10 M G
ELECTRONIC CTRL M	Electric		HPDL-10 M E TRIF.
	Gas		HPDL-10 M E MONO. HPDL-10 M G
TOUCH II Programmable Control	Heat pump	HPD-8 TOUCH II HPi	HPD-10 TOUCH II HPi



Heating codes
 E = ELECTRIC
 HW = HOT WATER
 G = GAS
 HPi = HEAT PUMP

Drain Codes
 V = VALVE
 P = PUMP

NOTE: All models can be easily converted to coin mode, with a coin kit, token kit or for central pay, etc.

WASHER EXTRACTORS



HPW

- ✔ High spin washer extractor. Soft mounted.
- ✔ G FACTOR 450.
- ✔ Grey skinplate body. AISI 304 Stainless steel drum and tub.
- ✔ Detergent manual dispenser with 4 compartments.
- ✔ 8 signals for automatic liquid dosing, programmable in time and delay.
- ✔ 2 water inlets (hot and cold).
- ✔ TOUCH II microprocessor with touchscreen.
- ✔ **DOMUSCONNECT: the IoT solution easy and free to manage the laundry, monitor machines, etc. from the cloud.**
- ✔ Model with drain valve and model with drain pump.
- ✔ Valve models especially designed for washing mops.
- ✔ Leveling feet included.
- ✔ CE and WRAS approved.

TUMBLE DRYERS



*

HPD

- ✓ Heavy professional tumble dryers 8 and 10 kg.
- ✓ Robust construction, grey skinplate panels. White painted panels for HPDL-10 M model.
- ✓ Industrial aluminium door with large diameter.
- ✓ TOUCH II microprocessor models, 4,3" touchscreen, programmable.
- ✓ Digital M programmer.
- ✓ DOMUSCONNECT: the IoT solution easy and free with TOUCH II to manage the laundry, monitor machines, etc. from the cloud.
- ✓ Versatile machine, same model for coin and OPL.
- ✓ Stackable on top of a HPW washer or on another HPD dryer, with control panels between both drums (except HPDL-10 M model).
- ✓ Electric heating with two possible configurations: 4.5 or 6.75 kw.
- ✓ Gas heated models both with TOUCH II and M.



12:30

CURRENT PROGRAM NAME

30°

P2 75'

50°

P2 75'

ECONERGY

DOMUS



4⁺ STRENGTHS



OUTSTANDING FEATURES

- ✓ **High G FACTOR 450**
- ✓ **User-friendly and totally programmable TOUCH II microprocessor** with a 4,3 touchscreen.
- ✓ **8 dosing signals as standard**
- ✓ **USB Connection.** Online platform free of charge for programming, telemetry, data analysis...
- ✓ **Telemetry standard:** all washing process (temperature, water levels) is stored in the washer and can be extracted by USB.
- ✓ **Wet Cleaning standard with the TOUCH II:** water levels and speed are modifiable.
- ✓ **DOMUSCONNECT - free standard connectivity**
- ✓ **Multi-payable systems**
- ✓ **Short Washing cycles** (heating Power 6 kW).
- ✓ **OPCIONES**
Silicone gasket, delayed opening in case of electric power cut, normally closed valve, maritime voltage.



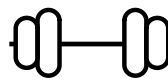
EFFICIENCY

- ✓ **Intelligent weighing system**
- ✓ **Optimal loading:** standard in all washers, for manual indication of the load weight.
- ✓ **Plinth for water recovery** (with tank included).
- ✓ **Plinth for mops** (filter included) only valve models.
- ✓ **High G FACTOR 450**
Reduced residual moisture > reduced drying time.



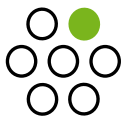
VERSATILITY

- ✓ **OPL <> Coin**
Standard model easily transformable.
- ✓ **Electric <> Hot water**
Standard Electric model easily transformable to hot water model.
- ✓ **Pump <> Drain valve**
Standard model easily transformable.
Easy access and service.
- ✓ **Single <> Stacked**
Standard model easily stackable with a dryer.
- ✓ **All models prepared for the Wet Cleaning system**
- ✓ **Suitable for many sectors:** Restaurants, gyms, campings, mop cleaning, apartments, coin laundries, dry cleaners, nurseries...



ROBUSTNESS

- ✓ **Outer casing in grey skinplate**
- ✓ **Robust aluminium door**
- ✓ **AISI 304 Stainless steel made inner drum, outer drum and ribs**
- ✓ **No inner drum seal (muffle):** easy to repair and clean.
- ✓ **Industrial house bearing and bearings** (up to 15.000 working hours) and possibility to replace bearings.
- ✓ **Same motor and inverter as industrial washers**
- ✓ **Industrial and heavy duty doorlock**
- ✓ **OPCIÓN**
Stainless Steel AISI-304 panels.



OUTSTANDING FEATURES

Programmable microprocessor



TOUCH II

4,3" touchscreen.

Configuration of washing and spinning speed.

Complete regulation of water levels.

Regulable washing temperature from 20 °C to 90 °C.

Standard Wet Cleaning system.

Videos on display

Ads, instructions (useful for coin laundries).



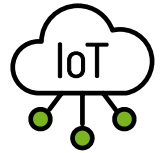
USB Connection

Online platform free of charge for programming, telemetry, data analysis...

Short wash cycles

(heating power 6 kW).

IoT



DOMUSCONNECT

Offers feedback from the machines to the device through the cloud, about telemetry and statistics to be analyzed and to ensure MAXIMUM HYGIENE.



High G FACTOR that reduces residual moisture and drying time

The higher the G FACTOR, the more water extraction and less residual moisture in the laundry.



EFFICIENCY

Low water consumption

A standard washing program consumes less than 8,2 litres of water per kg and cycle.

Water recovery plinth

(includes tank).



High G FACTOR 450 for high spin machines

LEMS by Onnera Pulse Concentrator

Water saving

Possibility of configuring three levels of savings.

Mop plinth includes filter

(models with valve only).



Optimal loading

Manual indication of weight.

Intelligent consumption

Automatic adjustment of water and soap (standard).





VERSATILITY

To adapt to the needs of the different businesses.

OPL <> Coin / Token

Standard models easily transformable with coin/token kits.

Electric <> Hot water

Standard electric models easily transformable to hot water models.

Drain valve <> Pump

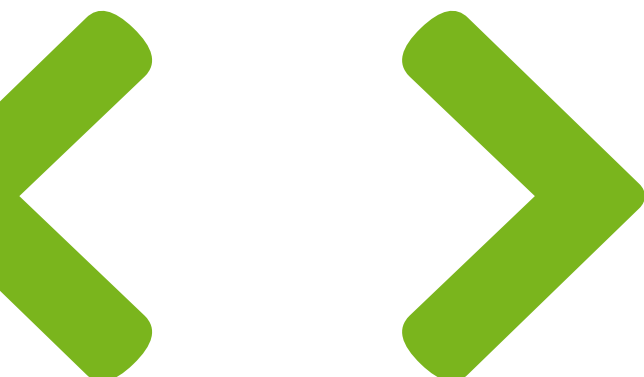
Standard models easily transformable. Easy access and service.

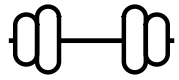
All washers have all features to use Wet Cleaning programs



Unit <> Stacked

The washing machine allows for stacking a dryer on top.





ROBUSTNESS

**Exterior cabinet
in grey skinplate**

**Cabinet in stainless steel
AISI-304** (optional)

Without muffle
Easier to repair and clean.

**Industrial-grade
bearing support
and bearings**

**Same motor and
inverter as industrial
washing machines**

**Robust, industrial
door lock**

**Sturdy aluminum
door**

**Drum, tub,
and paddles**

Made of stainless steel AISI-304.



40°C

60°C

90°C

ECOENERGY

DOMUS



4⁺ STRENGTHS



OUTSTANDING FEATURES

- ✓ **TWO CONTROLS:** TOUCH II: User friendly and fully programmable microprocessor with a 4,3" touchscreen.
- ✓ **M PROGRAMMER:** selection of time and temperature, user-friendly and versatile (OPL or coin laundry version).
- ✓ **DOMUSCONNECT - free standard connectivity** with TOUCH II.
- ✓ **USB port**
- ✓ **Reduced drying times** (less than 45 minutes). 6,75 kw heating, option 4,5 kw. ESSENTIAL model only 4,5 kw.
- ✓ **OPTIONS**
Multiple options: plinth, humidity sensor, etc.



EFFICIENCY

- ✓ **New range: HEAT PUMP MODELS**
- ✓ **EFFICIENT DRY:** humidity sensor (only with TOUCH II).
- ✓ **Optimised airflow**
- ✓ **Wide fluff filter**
- ✓ **Efficient design**



VERSATILITY

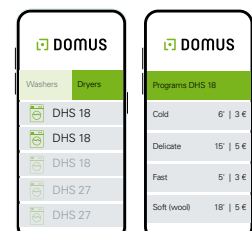
- ✓ **OPL <> Coin**
Standard models can be programmed as OPL or coin laundry version, central pay, etc.
- ✓ **Single <> Stacked**
Models can be stacked on top of a washer or on another dryer. Control panel can be assembled in a lower side and lower panel on the top for better ergonomics using a dryer stacked with a washer.
- ✓ **Ideal for multiple solutions:** hotels, hostels, campings, coin laundries, facility services (mops), gyms, etc.
- ✓ **New gas heated models both with TOUCH II and M**



ROBUSTNESS

- ✓ **Outer casing in grey skinplate:** White painted panels in HPDL-10 model.
- ✓ **Robust aluminium big door**
- ✓ **DRAWER AS FLUFF FILTER**
Not in the door but a specific drawer.
- ✓ **Industrial fan and powerful airflow**
- ✓ **Sturdy construction of the dryer structure and panels**

App for coin laundries





OUTSTANDING FEATURES

Microprocesador programable



TOUCH II

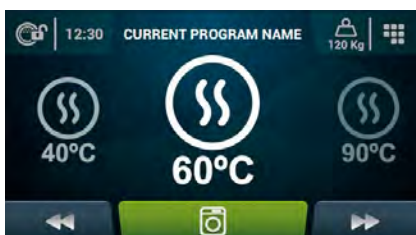
4,3" touchscreen.

Configuration of washing and spinning speed.

Complete regulation of water levels.

Regulable washing temperature from 20 °C to 90 °C.

Standard Wet Cleaning system.



USB Connection

Online platform free of charge for programming, telemetry, data analysis...

M programmer

Push buttons to control temperature and time.

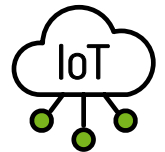
Simple and user friendly.

Programmable with external console (optional).

Display as option.



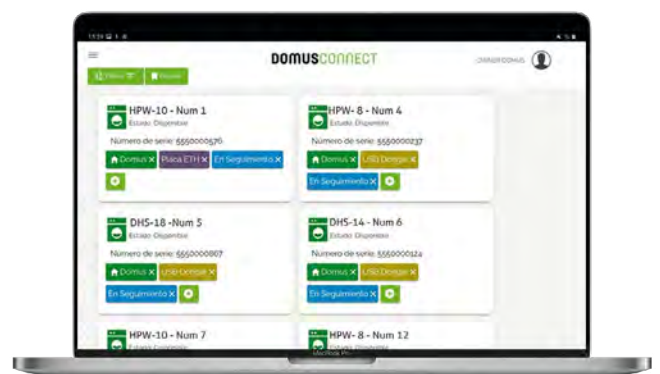
IoT



DOMUSCONNECT

The IoT connection is easy and free, standard across all ranges with the TOUCH II.

Offers feedback from the machines to the device through the cloud, about telemetry and statistics to be analyzed and to ensure MAXIMUM HYGIENE.



Reduced drying cycles

Less than 45 minutes.

6,75 kW heating, with an option for 4,5 kW.



EFFICIENCY



DOMUS washer extractors offer a wide variety of efficient features to make sure that the washing cycles use only the needed water and chemicals, not more.

Improved airflow system

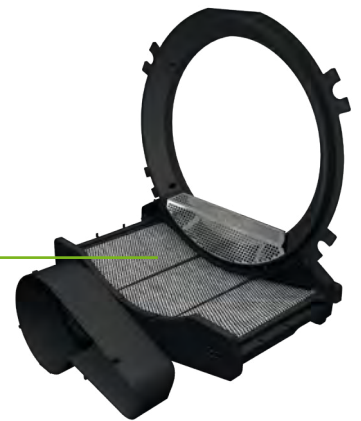
EFFICIENT DRY

Humidity sensor (available only with TOUCH II).

LEMS by Onnera Pulse Concentrator

Efficient design

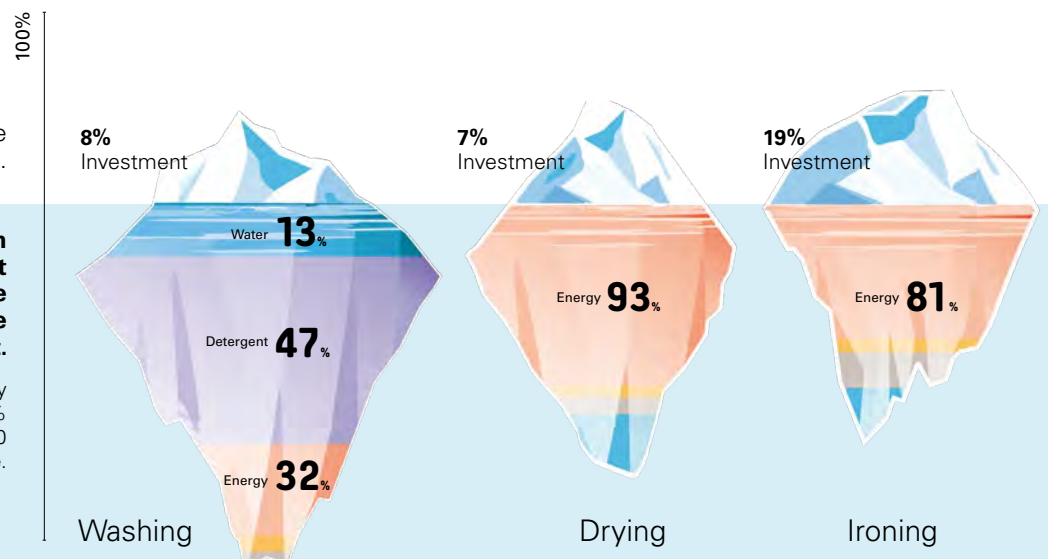
Big fluff filter



In a laundry, the machines are the visible part of an iceberg.

At DOMUS we pay attention to the iceberg part that cannot be seen, to optimize the expenses during the whole Life Cycle Cost.

Example of a standard laundry with 50% flat linen and 50% towelling, during the first 10 years of life.





VERSATILITY

To adapt to the needs of the different businesses.

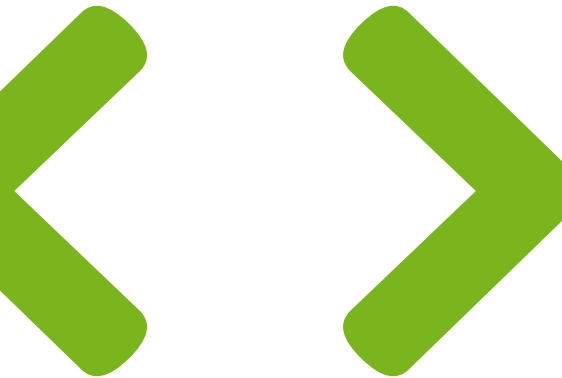
OPL <> Coin

Easy transformation from OPL to self-service.

Gas models with the TOUCH II microprocessor and M programmer

Unit <> Stacked

Reversible control panel: The control panel can be mounted at the bottom for better ergonomics when using a stacked dryer on top of a washer.



Ideal for many sectors

Hotels, campgrounds, self-service laundromats, gyms, etc.

Control panels can be mounted between the two drums for better ergonomics and easy use (except for the ESSENTIAL model).

ROBUSTNESS

Exterior cabinet in grey skinplate

White lacquered panels on HPDL-10 model.

Stronger construction for the frame and panels

Cabinet and drum in stainless steel (optional)

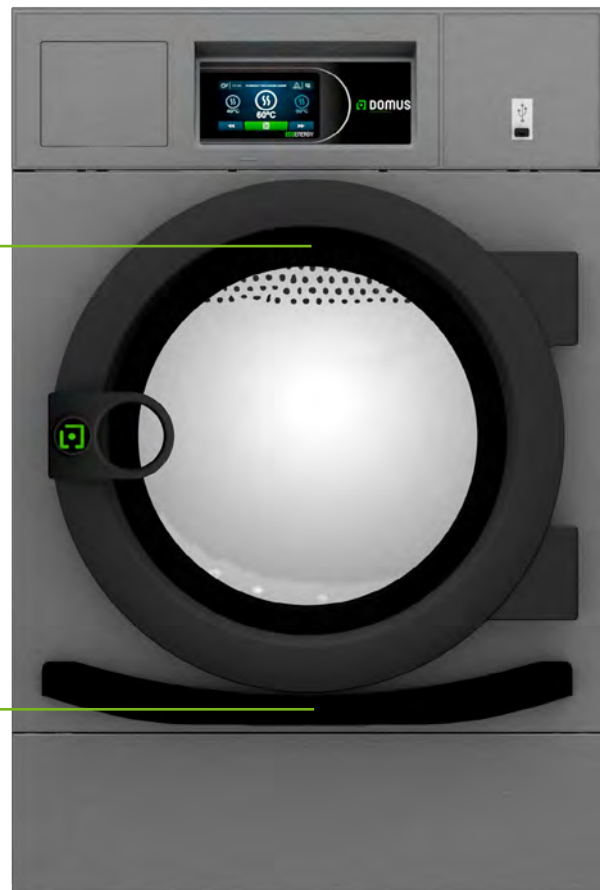
Industrial fan

With a powerful airflow

Sturdy aluminum door

Lint filter drawer

Not in the door but in a specific drawer



New

HEAT PUMP TUMBLE DRYERS

Versatile

Suitable for many businesses.

OPL laundries: spa, hairdresser's, apartments, and many small businesses.

Vended: coin laundries

Wet Cleaning shops

Easy to transform, for any sector

Easy installation

No extraction

Heavy professional heat pump dryers do not need exhaust to the exterior.

No need of refrigeration water.

Compact dimensions

Heat pump set in the plinth.

Low consumption

The heat pump dryer consumes 1/5 of the installed power compared to an electric equivalent dryer.

Electrical panel with lower power required.

Multitension 230/400V 50/60 Hz.

The HEAT PUMP RANGE is unique in features and efficiency.

Easy operation

Ergonomics.

Short drying times.

Reverse drum action standard.

Humidity control standard.

Wide environmental temperature range: 6°C to 46°C.

Easy maintenance

Easy front access to heat pump set

In the plinth.

No need of refrigeration water, no maintenance.

Type of gas: 410 A.



ECOENERGY

**ELECTRIC
DRYER**

18 kW

Low power

The heat pump dryer consumes 1/5 of the installed power compared to an electric equivalent dryer.

Efficient

It uses less than 0,5 kw/litre of evaporated water.

Optimized cycle time

Full load of
100% cotton towels

Professional dryer → **70 minutes**

60% load, 50% polyester
50% cotton towels

Professional dryer → **35 minutes**

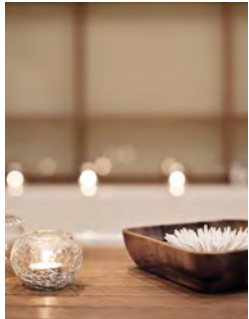
**Direct
Savings**



OPL APPLICATIONS

ESPECIALLY DESIGNED FOR YOUR BUSINESS

- HAIRDRESSERS
- WET CLEANING
- GYM
- COUNTRY HOUSES / HOSTELS
- BED & BREAKFAST
- SPA
- BEAUTY SALONS
- FACILITY SERVICES (MOPS)
- CARE HOMES
- LABORATORIES
- CLINICS
- NURSERIES
- SMALL INDUSTRIES



COIN APPLICATIONS

ESPECIALLY DESIGNED FOR EASY CONVERSION FROM OPL TO SELF-SERVICE

- COIN LAUNDRIES
- COLLEGES & UNIVERSITIES
- CLEAN + US FOR HOTELS
- APARTMENTS
- CAMPINGS
- HOSTELS
- COMMUNITIES



SEVERAL PAYMENT SYSTEMS AVAILABLE:

1



Coin/Token

In washers and dryers: mechanical token, mechanical coiner and electronic coiner.



2



DOMUS LAUNDRY

Payment App.
Payment by means of a third party app or our app, to pay with the mobile.



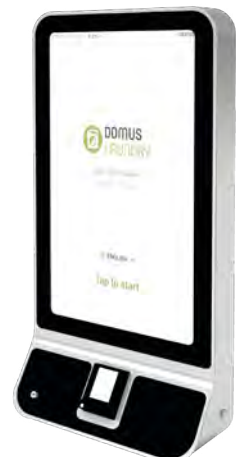
DOMUS		DOMUS	
Lavadoras	Secadoras	Programas DHS 18	
DHS 18		Frio	6' 3 €
DHS 18		Delicado	15' 5 €
DHS 18		Rápido	5' 3 €
DHS 27		Suave (lana)	18' 5 €
DHS 27			

3



DOMUS LAUNDRY KIOSK


New central pay.
The standard machine can work with any central pay system.




Several ways to connect

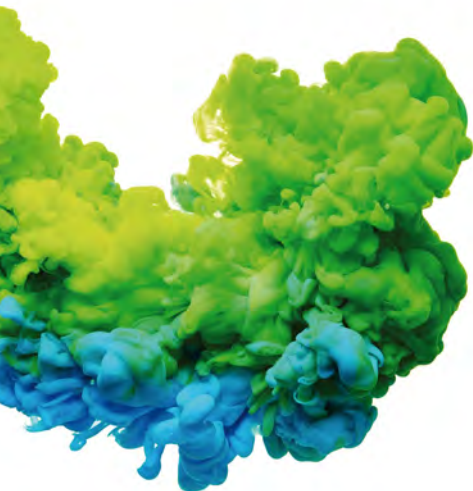
By pulses, by RS-485 protocol or by the IoT.

Heavy professional washer extractors

 HEAVY PROFESSIONAL WASHERS		UNIT.	HPW-8 V	HPW-8 P	HPW-10 V	HPW-10 P
DRUM						
Load capacity 1:9 / 1:10	Kg		9/8	9/8	11/10	11/10
Volume	l		80	80	100	100
Diameter	mm		532	532	532	532
Depth	mm		360	360	425	425
GENERAL DETAILS						
Washing speed - Spining speed	r.p.m.		50 / 1.250	50 / 1.250	50 / 1.250	50 / 1.250
G FACTOR	-		450	450	450	450
Maximum force transmitted	KN		1,47 ± 0,53	1,47 ± 0,53	1,57 ± 0,53	1,57 ± 0,53
Frequency-dynamic force	Hz		18,33	18,33	18,33	18,33
Coin laundry version	-		Yes	Yes	Yes	Yes
Double drain	-		Yes	No	Yes	No
Noise level	dB		<70	<70	<70	<70
Weighing system / Tilting system	-		No/No	No/No	No/No	No/No
DOOR						
Height center door - Height base door	mm		537 / 280	537 / 280	537 / 280	537 / 280
Diameter	mm		373	373	373	373
POWER						
Motor	kW		0,75	0,75	0,75	0,75
Electric heating power	kW		6	6	6	6
Total electric pwr (electric model)	kW		6,25	6,25	6,25	6,25
Total electric power (hot water model)	kW		0,75	0,75	0,75	0,75
DIMENSIONS / PACKING DIMENSIONS						
Width	mm		680 / 710	680 / 710	680 / 710	680 / 710
Depth	mm		698 / 832	698 / 832	742 / 832	742 / 832
Height	mm		1.040 / 1.130	1.040 / 1.130	1.040 / 1.130	1.040 / 1.130
Net weight - Gross weight	kg		140 / 150	140 / 150	150 / 160	150 / 160

Heavy professional tumble dryers

 HEAVY PROFESSIONAL DRYERS		UNIT.	HPD-8	HPD-10	HPDL -10	HPD-08 HPi	HPD-10 HPi
CAPACITY & DRUM							
Capacity 1:20	Kg		8	10	10	8	10
Volume	l		160	200	200	160	200
Drum Ø	mm		590	590	590	590	590
Drum depth	mm		585	690	690	585	690
DOOR							
Height center door	mm		554	554	554	918	918
Height base door	mm		320	320	320	684	684
Door Ø	mm		480	480	480	480	480
GENERAL DETAILS							
M control			Electronic	Electronic	Electronic	No	No
TOUCH II Control			Touchscreen 4,3"	Touchscreen 4,3"	N/A	Touchscreen 4,3"	Touchscreen 4,3"
USB connection. Only with TOUCH II			Yes	Yes	No	Yes	Yes
Construction			Skinplate panels	Skinplate panels	Skinplate panels	Skinplate panels	Skinplate panels
Plinth			OPT	OPT	No	HP	HP
Coin laundry version			Yes	Yes	Yes	Yes	Yes
Noise level	dB		62	62	62	61	61
POWER							
Motor	kW		0,37	0,37	0,37	0,37	0,37
Electric heating	kW		4,92 / 7,17	4,92 / 7,17	4,5	2,85	2,85
Gas heating	kW		7	7	7	No	No
CONSUMPTIONS							
Electric heating	kW		4,5 / 6,75	4,5 / 6,75	4,5	No	No
Average propane gas consumption	kg/h		0,45	0,45	0,45	No	No
Average natural gas consumption	m3/h		0,46	0,46	0,46	No	No
OTHERS							
Fume exhaust Ø	mm		100	100	100	No	No
Maximum airflow	m3/hour		300	300	300	-	-
DIMENSIONS / PACKING DIMENSIONS							
Width	mm		680 / 710	680 / 710	680 / 710	680 / 710	680 / 710
Depth	mm		722 / 832	775 / 832	775 / 832	722 / 832	775 / 832
Height	mm		1.056 / 1.141	1.056 / 1.141	1.056 / 1.141	1.408 / 1.520	1.408 / 1.520
Net weight - Gross weight	kg		89 / 101	93 / 104	93 / 104	245 / 260	250 / 265



DOMUS

WINNING THE FUTURE THROUGH INNOVATION

C. Energia, 12 - Pol. Ind. La Quintana
08504 Sant Julià de Vilatorca
BARCELONA (SPAIN)

SALES DEPARTMENT

T. +34 93 812 27 96
M. +34 649 482 730
domus@domuslaundry.com
export@domuslaundry.com

AFTER SALES DEPARTMENT

T. +34 93 888 76 73
sat@domuslaundry.com

PARTS DEPARTMENT

T. +34 93 888 76 83
parts@domuslaundry.com

ONNERA GROUP

V.1.24



WWW.DOMUSLAUNDRY.COM

