



BARRIER WASHER EXTRACTORS

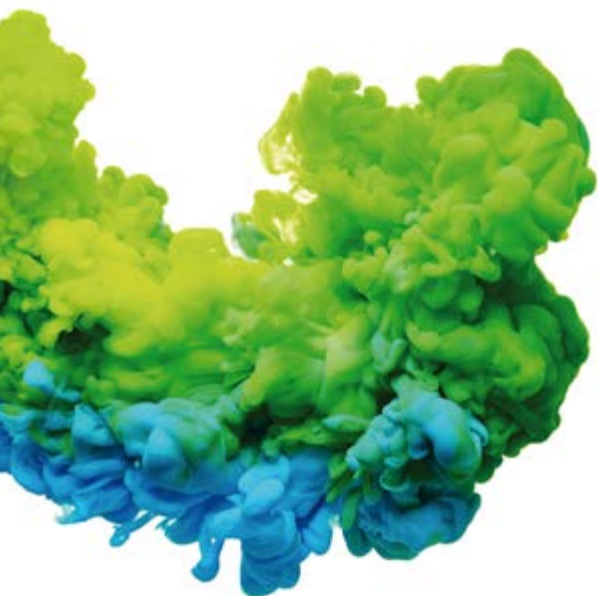
ECOVOLUTION
by **DOMUS**

Power, control and total disinfection

The strict sanitary rules RABC require powerful machines with specific washing processes for hospitals, care homes, pharmaceutical, nuclear and cosmetic industries, etc.

DOMUS range of barrier washers outstand for its advanced technology, ergonomics and safety features. With capacities from 16 to 100 kg; they are perfect to adapt to the needs of this very specific and demanding market. Installed between two separate areas, avoids any contact between dirty (infectious) linen and clean linen, as well as any type of re-contamination during the process. At the same time, its ergonomic design allows to work in an efficient way, which increases production in a high percentage.

We offer several ranges, all of them with TOUCH II microprocessor: 7" touchscreen with features to ensure EFFICIENCY and MAXIMUM HYGIENE.



ECOVOLUTION

by DOMUS



MEDICAL BARRIER WASHERS | ASM 180°

CONTROL TYPE	HEATING	CAPACITY	
		16 kg	22 kg
TOUCH II Programmable Control	Electric, HW + steam	ASM-16 TOUCH II	ASM-22 TOUCH II



BARRIER WASHERS | DHB

CONTROL TYPE	HEATING	HEATING			
		27 kg	35 kg	50 kg	70 kg
TOUCH II Programmable Control	Electric, steam, electric + steam	DHB-27 TOUCH II	DHB-35 TOUCH II	DHB-50 TOUCH II	DHB-70 TOUCH II
TOUCH II Programmable Control	Electric, steam, electric + steam	DHB-27 TOUCH II NEW PULLMAN OPTION	DHB-35 TOUCH II NEW PULLMAN OPTION	DHB-50 TOUCH II NEW PULLMAN OPTION	DHB-70 TOUCH II



BARRIER WASHERS | PULLMAN

CONTROL TYPE	HEATING	HEATING
		100 kg
TOUCH II Programmable Control	Electric and steam	ASA-100 TOUCH II PULLMAN

HIGH SPIN



ASM

- ✔ Pass-through barrier washer extractors with 2 opposed doors (180°) with sanitary separating frame.
- ✔ Models of 16 and 22 kg.
- ✔ G Factor 350.
- ✔ TOUCH II Microprocessor with a 7" touch screen.
- ✔ Domus connect - standard IOT connectivity.
- ✔ Two water inlets.
- ✔ Outer casing in skinplate, top stainless steel.
- ✔ Central drain.
- ✔ Automatic positioning of drum.
- ✔ Heating: electric, steam.
- ✔ New model dual heating (electric + steam).



DHB

- ✔ Pass-through barrier washers, with 2 opposed doors (180°), soft mounted.
- ✔ Models of 27, 35, 50 and 70 kg. G Factor 375.
- ✔ TOUCH II Microprocessor with a 7" touch screen.
- ✔ Domus connect - standard IOT connectivity.
- ✔ Models of 27, 35, 50 and 70 kg. G Factor 375.
- ✔ TOUCH II Microprocessor with a 7" touch screen.
- ✔ Double display standard.
- ✔ Panels in grey skinplate and top panel in stainless steel.
- ✔ Drum and vat in stainless steel AISI 304.
- ✔ Three water inlets.
- ✔ Central drain.
- ✔ Automatic positioning of drum, with motor brake standard.
- ✔ Heating: electric, steam.
- ✔ New model dual heating (electric + steam).
- ✔ New pullman drum option.



HIGH SPIN



PULLMAN

- ✔ Pass-through barrier washer - Pullman partition, soft mounted.
- ✔ 100 kg. model. G Factor 325.
- ✔ TOUCH II Microprocessor with a 7" touch screen.
- ✔ Domus connect - standard IOT connectivity.
- ✔ Double display standard.
- ✔ Three water inlets.
- ✔ External panels in skinplate and top in stainless steel.
- ✔ Drum and vat in stainless steel AISI 304.
- ✔ Central drain.
- ✔ Automatic positioning of drum, with motor brake standard.
- ✔ Heating: electric, steam.
- ✔ Dual heating as option (electric + steam).

ECOENERGY



TOUCH II

- ✓ **TOUCH II Microprocessor**, user friendly and totally programmable 7" screen touch
- ✓ **Telemetry as standard**
- ✓ **8 dosing signals as standard**
- ✓ **Screen on both sides of the machine**
Touch operated on the dirty side and only displaying on the clean side to show the status of the washing program
- ✓ **Domus connect** - connectivity standard
- ✓ **USB Connection**. PC software free of charge for programming, telemetry, data analysis...
- ✓ **Remote communication ready**
- ✓ Customisation of programs according to each need
- ✓ **Wet Cleaning**
- ✓ **OPTIONS**
 - Printer
 - 6 extra dosing signals



ERGONOMICS

- ✓ **Huge doors** opening making loading and unloading operation easier, biggest opening in the market (Ex: DBW35: Drum 640 x 515 mm – Vat 700 x 650 mm)
- ✓ **User-friendly drum opening by push button**
- ✓ Standard height of loading (door base at 800 mm)
- ✓ **OPTIONS**
 - Plinth to align loading height (door base at 850 mm)



OUTSTANDING FEATURES

- ✓ **Double display** (as option in ASM models)
- ✓ **Automatic positioning of drum** with motor brake to make loading and unloading operations easier (as option in ASM models)
- ✓ **3 water inlets as standard** (2 water inlets in ASM range)
- ✓ **Wet cleaning**: equipped with all features to use Wet cleaning programs (useful in nursing homes)
- ✓ Side panels in skinplate and top panel in stainless steel, **easy to clean**
- ✓ **New dual heating electric-steam model - energy savings**
- ✓ **OPTIONS**
 - Detergent box kit (instead of pumps)
 - 2nd drain valve for water recovery
 - Titration valve
 - UPS kit to release drum brake in case of power failure
 - AISI 304 stainless steel outer casing



CONNECTIVITY

DomusConnect - connectivity standard

- ✓ **Remote technical service**: machine monitoring, error warning, remote desk and data recovery for technicians and maintenance, software updates
- ✓ **Management of laundries**



EFFICIENCY

- ✓ **Water saving**
Possibility of configuring three levels of savings
- ✓ **Optimal loading:** manual indication of weight
- ✓ **Intelligent Consumption:** automatic adjustment of water and soap consumptions (standard)
- ✓ **Prepared to be connected to water recovery tanks ECOTANK and new ECOTANK XL**
- ✓ **Low water consumption**
Standard washing program consumes less than 8,2 liters of water per kg and cycle
- ✓ **High G-FACTOR 500-450 for High spin machines**
Reduced residual moisture > reduced drying time
- ✓ **OPTIONS**
Automatic weighing system on feet



MAINTENANCE

- ✓ **Electric components on the left side, mechanic components on the right side, connections on the top**
Easy access to all the components
Easier to connect, all connections protected from water and detergents
- ✓ **Central drain** easy installation
- ✓ **Technical menu**
Statistics, alarms, autotest, data recovery for technicians and maintenance
- ✓ **OPTIONS**
Side drain
Low steam pressure: to enable installation of steam heated washer with very low pressure of steam on site





Programmable
microprocessor

TOUCH II

Connectivity, telemetry
and efficiency are the most
outstanding features on
TOUCH II.

Microprocessor TOUCH II

User friendly, totally
programmable 7"
touchscreen

Configuration of washing and spinning speed.
Complete regulation of water levels
Regulable washing temperature from 20°C to 90°C.
Standard WET CLEANING system.

Wet Cleaning, telemetry as standard

Equipped with all features to use wet cleaning
programs (useful in nursing homes)
Adjustable washing speeds and temperatures
Fully regulation of water levels
8 dosing signals as standard + 6 extra as option

37 languages

Available and easy to
configure, thanks
to DOMUS aim to be
accessible to everyone.

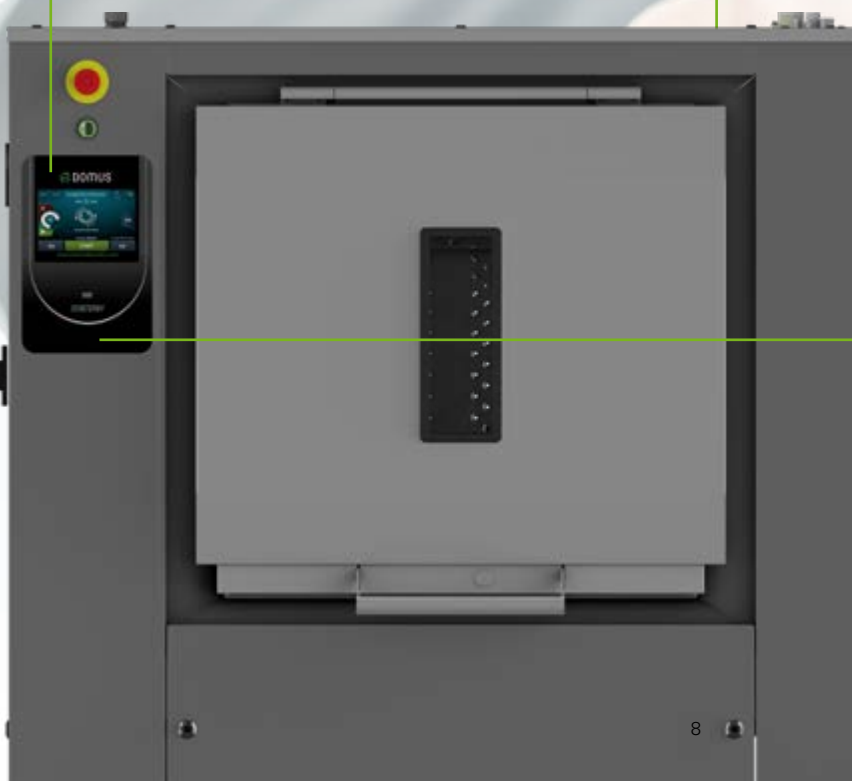


Screen on both sides of the machine

Standard on DHB and Pullman.
Touch operated on the dirty side and
only displaying status of program on
the clean side (option in ASM models).

USB Connection

Online platform free of
charge for programming,
telemetry, data analysis...



OUTSTANDING FEATURES

Outer casing in skinplate

and top panel in stainless steel,
easy to clean. As option, AISI 304
stainless steel outer casing

3 water inlets

standard in DHB and Pullman
(third inlet as option in ASM
models)

Automatic positioning of drum

Standard, with motor
brake to make loading and
unloading operations (as
option in ASM models)



Other options

Detergent box kit (instead of pumps)
Dual heating electric - steam: energy savings
2nd drain valve for water recovery
Titration valve



EFFICIENCY

High G-Factor reduces residual moisture and drying time



Automatic weighing system on feet

as option (not available on ASA-100)



Optimal loading

Manual indication of the loading weight (standard feature)

Water savings

Possibility to choose from three levels of savings (standard)



ECOTANK

Prepared to be connected to water recovery tanks

Domus barrier washer extractors, with Touch II and the double drain, can be connected to the new Ecotank, which allows the water recovery, achieving important water and energy savings.



ECOTANK XL

New centralized water tanks for one or more machines, 1 to 3 1.000 litres tanks.



DOMUS new ranges of barrier washers have focused on water, energy and chemical savings, as well as top performance as main priority.

Water

Saving water and using it properly are our goals, we do not want to waste it. We offer washing machines with optimised design and programming as well as a unique accessory, the **ECOTANK**: water recovery tanks.



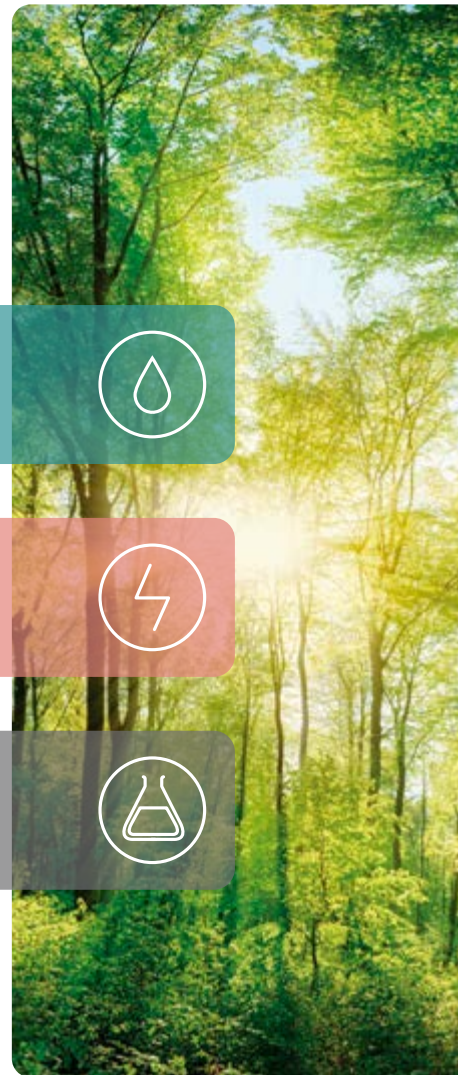
Energy

Energy optimisation is fundamental in a laundry. Our machines have been designed for greater energy savings with this in mind.



Chemicals

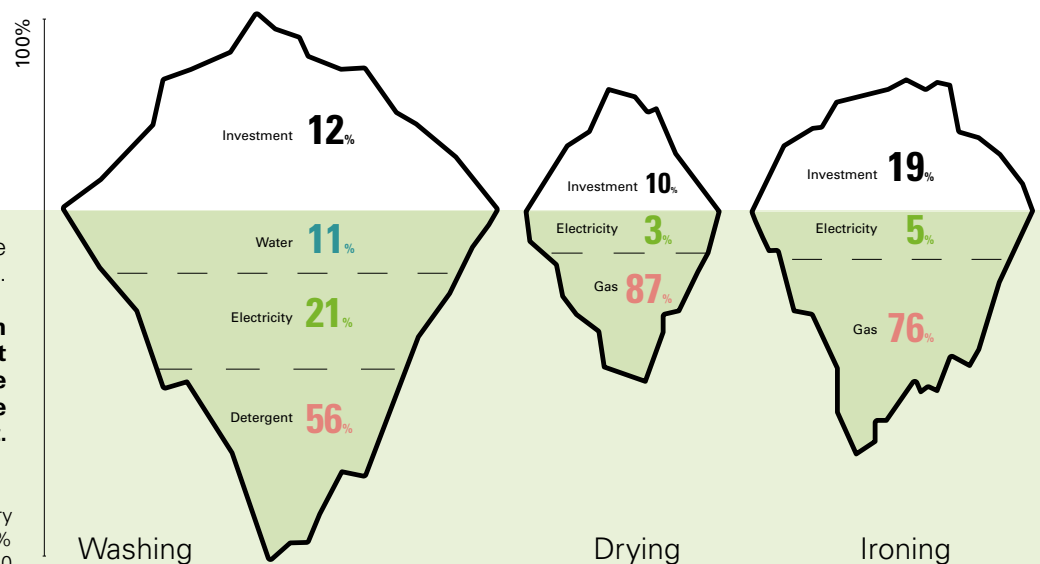
We design our washing machines with features to ensure the most accurate use of chemicals.



In a laundry, the machines are the visible part of an iceberg.

At Domus we pay attention to the iceberg part that cannot be seen, to optimize the expenses during the whole Life Cycle Cost.

Example of a standard laundry with 50% flat linen and 50% towelling, during the first 10 years of life.





ERGONOMICS

As health and safety at work had become an important issue, our equipment is designed to be the most comfortable for the user.

Ergonomic height of loading

Plinths to align loading height

(door base at 850 mm except on ASA-100)



User friendly drum opening by push button



Huge door opening

making the loading and unloading operations easier, biggest opening in the market.

Huge doors

- DHB 27** 542 x 650 mm
- DHB 35/50** 700 x 650 mm
- DHB 70** 1402 x 650 mm
- ASA-100** 960x700 mm

850 mm



CONNECTIVITY

The **IoT connection is easy and free**, standard on all ranges.

DOMUSCONNECT



IoT Features

MANAGEMENT

- Management of washing and drying programs and phases
- Configurable statistics, cycles carried out, income (Coin), errors, productions, production reports and water, chemical and energy consumption, workloads, etc.
- Creation of daily, weekly reports, etc. Sending by email with the information and statistics.
- **Telemetry**: storage and access of all data and signals from the machines for later use and consultation (times, temperatures, errors, water levels, dosages, speeds, etc.). Very useful for users, technical services, chemists, etc.
- Machine configurations
- Remote desktop control of machines
- Geolocation

TECHNICAL SERVICE

- Access to technical documentation, videos, manuals, exploded views, electrical diagrams, etc.
- Configuration of sending notifications and errors.
- Management of interventions.



SAT- trouble shooting



Owner / end user

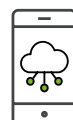


Improves usability, efficiency and comfort. Business control: configurable reports of production, cycles, consumption, revenue,... Ensure the washing and drying processes, ensure hygiene and disinfection, washing quality...

+ information + security + control

Telemetry

Custom graphics for monitoring of your business



Dealer

Technological base for new business (renting, maintenance contracts, self-services...). Databases of installed machines (geographical distribution, models...). Added value of DOMUSConnect machines for the customer.

+ opportunity + information + added value



Chemical partners

Management and creation of washing and drying programs (online and offline). Ensure the washing and drying processes, ensure hygiene and disinfection, washing quality... Troubleshooting and remote management. Telemetry and complete information of all the programs carried out.

+ information + management + ease



Technical service

Improvement of customer service Improvement of processes (more efficient and lower costs) avoiding unnecessary trips. Remote troubleshooting and maintenance programs. Telemetry and complete information of all the programs carried out.

Access to technical documentation, videos, etc.

+ efficiency + support + information



MAINTENANCE

One of DOMUS concerns is to make life easier for our clients. That includes offering quality equipment and parts of reputed brands, which demand little maintenance.

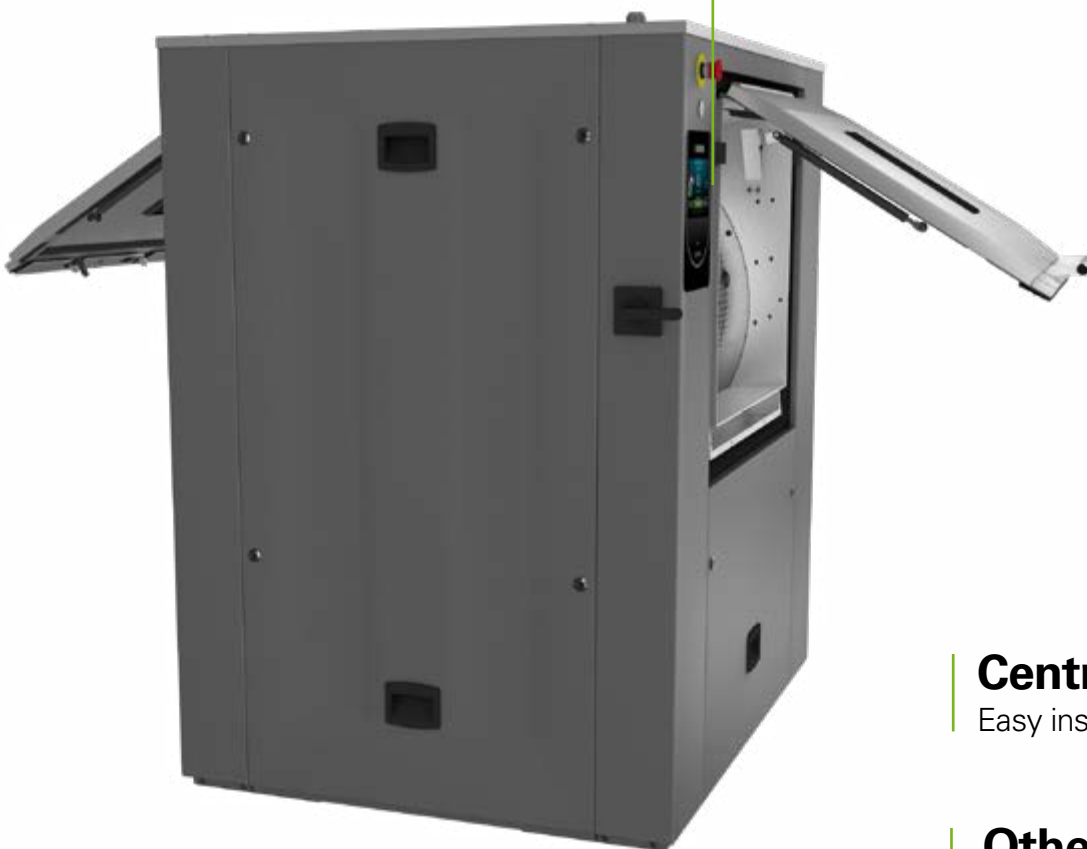
Easy access to components

Electric components on the left side, mechanic components on the right side, connections on the top. Easy access to all the components.

Easier to connect, all connections protected from water and detergents.

Technical menu

Statistics, alarms, autotest, data recovery for technicians and maintenance.



Central drain


Easy installation.

Other options

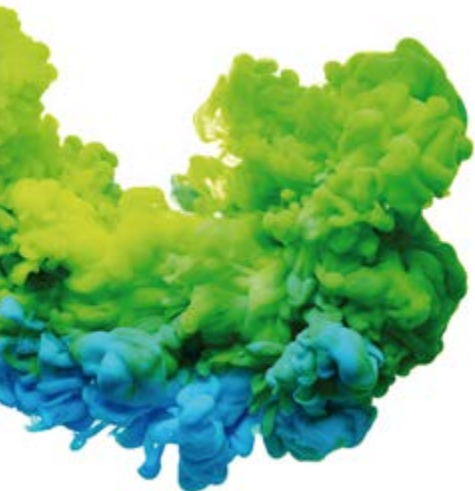
Side drain.

Low steam pressure: to enable installation of steam heated washer with very low pressure of steam on site.

Technical data

 MEDICAL RANGE		UNIT.	ASM-16	ASM-22	DHB-27	DHB-35	DHB-50	DHB-70	ASA-100
DRUM									
Load capacity 1:9	Kg	18	25	30	39	54	78	100	
Load capacity 1:10	Kg	16	22	27	35	49	70	90	
Volume	l	158	220	266	347	489	694	900	
Diameter	mm	633	633	800	800	800	800	1050	
Depth	mm	500	700	530	690	974	1380	1032	
Drum compartments		1	1	1	1	1	2	2	
GENERAL DETAILS									
Washing speed	r.p.m.	45	45	45	45	45	45	45	
Spining speed	r.p.m.	1000	1000	920	920	920	920	750	
G Factor		350	350	375	375	375	375	325	
Double drain		OPT	OPT	OPT	OPT	OPT	OPT	STD	
TOUCH II Screen		7"	7"	7"	7"	7"	7"	7"	
Double display		OPT	OPT	STD	STD	STD	STD	STD	
Electric brake		OPT	OPT	STD	STD	STD	STD	STD	
Plinth of height		OPT	OPT	OPT	OPT	OPT	OPT	N/A	
3 water inlets		OPT	OPT	STD	STD	STD	STD	STD	
DOOR									
Drum opening dimensions	mm	400x315	400x315	480x515	640x515	640x515	2x(640x515)	900x500	
Vat opening dimensions	mm	455x415	455x415	542x650	700x650	700x650	1402x650	960x700	
Height base door	mm	670	670	800	800	800	800	960	
POWER									
Motor (kW)	kW	2,2	2,2	4	4	5,5	7,5	15	
Heating (kW) (Electric / dual model)	kW	12	18	18	27	36	45	60	
Max. power (kW) (Electric model)	kW	14,2	20,2	22	31	41,5	52,5	75	
Max. power (kW) (Steam model)	kW	2,2	2,2	4	4	5,5	7,5	15	
CONNECTIONS									
Water inlet	inch	3/4"	3/4"	3/4"	3/4"	1"	1"	1"	
Steam inlet	inch	3/4"	3/4"	3/4"	3/4"	3/4"	3/4"	3/4"	
Drain (mm)	inch	3"	3"	3"	3"	3"	3"	3"	
Compressed air inlet	mm	N/D	N/D	N/D	N/D	N/D	N/D	8	
DIMENSIONS									
Width (mm)	mm	1.056	1.245	1.264 (1.416)	1.422 (1.574)	1.717 (1.869)	2.124 (2.276)	1.742 (1.894)	
Depth (mm)	mm	1.071	1.071	1.195	1.195	1.195	1.195	1.468	
Height (mm)	mm	1.417	1.417	1.615	1.615	1.615	1.615	1.982	
Net weight (Kg)	Kg	438	471	886	926	1.063	1.190	1.900	
PACKING DIMENSIONS									
Width (mm)	mm	1.072	1.262	1.464	1.608	1.903	2.310	1.890	
Depth (mm)	mm	1.102	1.102	1.300	1.300	1.300	1.300	1.540	
Height (mm)	mm	1.530	1.530	1.720	1.720	1.720	1.720	2.150	
Gross weight (Kg)	Kg	459	494	906	946	1.085	1.220	1.958	
Volume (m3)	m ³	1,81	2,13	3,27	3,60	4,26	5,17	6,26	

*DOMUS reserves the right to modify the technical data without notice.



DOMUS

WINNING THE FUTURE THROUGH INNOVATION

C. Energia, 12 - Pol. Ind. La Quintana
08504 Sant Julià de Vilatorca
BARCELONA (SPAIN)

SALES DEPARTMENT

T. +34 93 888 71 53
M. +34 649 482 730
domus@domuslaundry.com
export@domuslaundry.com

AFTER SALES DEPARTMENT

T. +34 93 888 76 73
sat@domuslaundry.com

PARTS DEPARTMENT

T. +34 93 888 76 83
parts@domuslaundry.com



ONNERA GROUP



WWW.DOMUSLAUNDRY.COM

