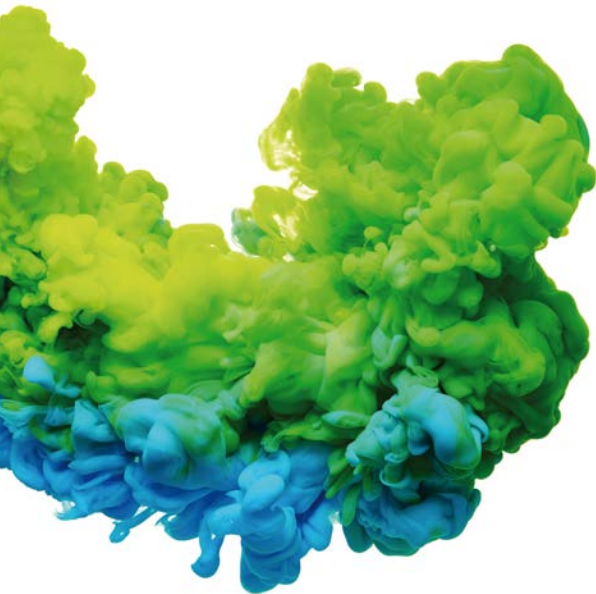




# TUMBLE DRYERS

2025



## The new state of the art in drying

DOMUS Ecovolution dryers move on with new features on efficiency and connectivity.

Our principles of constant innovation in technology result in a variety of technologically advanced and EFFICIENT machines.

All models have the big 7" touchscreen microprocessor TOUCH II, for great comfort and operation. A wide range: 11, 14, 18, 22, 28, 35, 45, 60 and 80kg. The three largest capacity models have as option the sliding door for easy loading and unloading.

The most efficient range: ECO-ENERGY with AIR RE-CYCLE, EFFICIENT DRY moisture control, THERMAL INSULATION, TOUCH II control, connectivity DOMUS CONNECT as standard as well as WET CLEANING system possibility.

Other ranges like DYNAMIC dryers (EFFICIENT DRY as option) and COMFORT (with M programmer) are versatile and even the ESSENTIAL range features the REVERSE DRUM and INVERTER as standard, for the most price-concerned markets.

STACK dryers have a wide range now: 11, 14, 18 and 22kg models.

All ranges can be used as OPL or COIN by simply making a slight modification in the coiner or connecting them to the new DOMUS LAUNDRY KIOSK or any other central pay or to IoT.

## Single pocket



### DOMUS ECO-ENERGY | The most efficient

CONTROL TYPE	HEATING	CAPACITY								
		11-12 kg	14-15 kg	17-18 kg	22-24 kg	28-31 kg	33-37 kg	45-50 kg	60-67 kg	75-83 kg
MICROPR. TOUCH II	Electric, gas, steam	DTT-11 ECO-ENERGY	DTT-14 ECO-ENERGY	DTT-18 ECO-ENERGY	DTT-22 ECO-ENERGY	DTT-28 ECO-ENERGY	DTT-35 ECO-ENERGY	DTT-45 ECO-ENERGY	DTT-60 ECO-ENERGY	DTT-80 ECO-ENERGY



### DOMUS DYNAMIC

CONTROL TYPE	HEATING	CAPACITY								
		11-12 kg	14-15 kg	17-18 kg	22-24 kg	28-31 kg	33-37 kg	45-50 kg	60-67 kg	75-83 kg
MICROPR. TOUCH II	Electric, gas, steam	DTT-11	DTT-14	DTT-18	DTT-22	DTT-28	DTT-35	DTT-45	DTT-60	DTT-80



### DOMUS COMFORT

CONTROL TYPE	HEATING	CAPACITY								
		11-12 kg	14-15 kg	17-18 kg	22-24 kg	28-31 kg	33-37 kg	45-50 kg	60-67 kg	75-83 kg
ELECTRONIC CTRL M	Electric, gas, steam	DTM-11	DTM-14	DTM-18	DTM-22	DTM-28	DTM-35	DTM-45	DTM-60	DTM-80



### DOMUS ESSENTIAL

CONTROL TYPE	HEATING	CAPACITY					
		11-12 kg	14-15 kg	17-18 kg	22-24 kg	28-31 kg	33-37 kg
ELECTRONIC CTRL M	Electric, gas	DLM-11	DLM-14	DLM-18	DLM-22	DLM-28	DLM-35

## Double pocket: STACK



### DOMUS DYNAMIC

CONTROL TYPE	HEATING	CAPACITY			
		11-12 kg	14-15 kg	17-18 kg	22-24 kg
MICROPR. TOUCH II	Electric, gas	DTT2-11 XP	DTT2-14 XP	DTT2-18 XP	DTT2-22 G XP



### DOMUS COMFORT

CONTROL TYPE	HEATING	CAPACITY			
		11-12 kg	14-15 kg	17-18 kg	22-24 kg
ELECTRONIC CTRL M	Electric, gas	DTM2-11 XP	DTM2-14 XP	DTM2-18 XP	DTM2-22 G XP



### DOMUS ESSENTIAL

CONTROL TYPE	HEATING	CAPACITY			
		11-12 kg	14-15 kg	17-18 kg	22-24 kg
ELECTRONIC CTRL M	Electric, gas	DLM2-11 XP	DLM2-14 XP	DLM2-18 XP	DLM2-22 G XP

NOTE: All models can be easily converted to self-service mode, with a coin kit, token kit or for central pay, except 45kg to 80kg models and ECO-ENERGY range.

# Single pocket



## DTT

### ECOENERGY | The most efficient

- ✔ AIR RE-CYCLE: air recovery system for great energy efficiency.
- ✔ EFFICIENT DRY: the intelligent humidity sensor.
- ✔ THERMAL INSULATION: the complete circuit of the airflow.
- ✔ FULL FLOW: optimized axial-radial airflow.
- ✔ SFEX: Integrated Fire Extinguishing System.
- ✔ DOMUSCONNECT - standard IoT connectivity.
- ✔ Microprocessor TOUCH II: 7" coloured touch screen.
- ✔ Grey skinplate body, stainless steel look.
- ✔ Big loading door (opening of 180°).
- ✔ REVERSE ACTION: standard in all models.
- ✔ STAINLESS STEEL DRUM standard.
- ✔ SOFT DRY: the new drum with stamped holes.
- ✔ FULL SCREEN FILTER: new filter drawer with wide surface and improved airflow.
- ✔ COOL DOWN: anti-wrinkle at the end of cycle.
- ✔ Models available in electric, gas or steam heating.

#### OPTIONS

- Perfume dosing system.
- Front tilt on big capacity.
- Sliding door.



## DTT

### DYNAMIC

- ✔ Microprocessor TOUCH II: 7" touch screen for all models.
- ✔ DOMUSCONNECT - standard IoT connectivity.
- ✔ Grey skinplate body, stainless steel look.
- ✔ Big loading door (opening of 180°).
- ✔ REVERSE ACTION: standard in all models.
- ✔ STAINLESS STEEL DRUM standard.
- ✔ DOUBLE FLOW: mixed axial-radial airflow.
- ✔ SOFT DRY: the new drum with stamped holes.
- ✔ FULL SCREEN FILTER: new filter drawer with wide surface and improved airflow.
- ✔ COOL DOWN: anti-wrinkle at the end of cycle.
- ✔ Models available in electric, gas or steam heating.

#### OPTIONS

- ✔ **Sliding door**, ergonomic and ideal for taking up less space.
- EFFICIENT DRY: the intelligent humidity sensor.
- SFEX: Integrated Fire Extinguishing System.
- Double door glass.
- Perfume dosing system.
- Front tilt on big capacity.



## DTM

### COMFORT

- ✔ M programmer: push buttons to control temperature and time.
- ✔ Grey skinplate body, stainless steel look.
- ✔ Big loading door (opening of 180°).
- ✔ REVERSE ACTION: standard in all models.
- ✔ STAINLESS STEEL DRUM standard.
- ✔ DOUBLE FLOW: mixed axial-radial airflow.
- ✔ SOFT DRY: the new drum with stamped holes.
- ✔ FULL SCREEN FILTER: new filter drawer with wide surface and improved airflow.
- ✔ COOL DOWN: anti-wrinkle at the end of cycle.
- ✔ Models available in electric, gas or steam heating.

#### OPTION

- Display for M programmer.



## DLM

### ESSENTIAL

- ✔ M programmer: push buttons to control temperature and time.
- ✔ White painted panels. Galvanized drum.
- ✔ Big loading door (opening of 180°).
- ✔ REVERSE ACTION: standard in all models.
- ✔ FULL SCREEN FILTER: new filter drawer with wide surface and improved airflow.
- ✔ COOL DOWN: anti-wrinkle at the end of cycle.
- ✔ Models available in electric or gas heating.
- ✔ DOUBLE FLOW: mixed axial-radial airflow.



## Double pocket: STACK



### DTT2 XP New DYNAMIC

- ✔ Microprocessor TOUCH II: 7" color touch screen.
- ✔ DOMUSCONNECT - standard IoT connectivity.
- ✔ Grey skinplate body, stainless steel look
- ✔ Big loading door (opening of 180°).
- ✔ REVERSE ACTION: standard in all models.
- ✔ STAINLESS STEEL DRUM Standard
- ✔ DOUBLE FLOW: mixed axial-radial airflow
- ✔ SOFT DRY: the new drum with stamped holes
- ✔ FULL SCREEN FILTER: new filter drawer with wide surface and improved airflow.
- ✔ COOL DOWN: anti-wrinkle at the end of cycle.
- ✔ OPTIONS FOR DTT
  - EFFICIENT DRY: the intelligent humidity sensor.
  - SFEX: Integrated Fire Extinguishing System.
  - Double door glass.
  - Perfume dosing system.



### DTM2 XP New COMFORT

- ✔ M programmer: push buttons to control temperature and time.
- ✔ Grey skinplate body, stainless steel look
- ✔ Big loading door (opening of 180°).
- ✔ REVERSE ACTION: standard in all models.
- ✔ STAINLESS STEEL DRUM Standard.
- ✔ DOUBLE FLOW: mixed axial-radial airflow.
- ✔ SOFT DRY: the new drum with stamped holes.
- ✔ FULL SCREEN FILTER: new filter drawer with wide surface and improved airflow.
- ✔ COOL DOWN: anti-wrinkle at the end of cycle.
- ✔ OPTIONS FOR DTM
  - Double door glass.
  - Display for M programmer.



### DLM2 XP New ESSENTIAL

- ✔ M programmer: push buttons to control temperature and time.
- ✔ White painted panels. Galvanized drum.
- ✔ Big loading door (opening of 180°).
- ✔ REVERSE ACTION: standard in all models.
- ✔ DOUBLE FLOW: mixed axial-radial airflow
- ✔ SOFT DRY: the new drum with stamped holes
- ✔ FULL SCREEN FILTER: new filter drawer with wide surface and improved airflow.
- ✔ COOL DOWN: anti-wrinkle at the end of cycle.
- ✔ Models available in electric or gas heating.



# ECOENERGY



## TOUCH II

- ✓ User friendly and totally programmable microprocessor with a **7" touch screen**.
- ✓ **DOMUSCONNECT** - Standard and free IoT connectivity.
- ✓ **Videos shown on display**: ads, instructions (useful for coin laundry).
- ✓ **USB port**: configure, update and analyse machines without internet connection.
- ✓ **Optional:**  
**Dosing/vaporizing system** (softeners/ perfumes).



## OUTSTANDING FEATURES

- ✓ **Reversing drum action** as standard.
- ✓ **Stainless steel drum** as standard.
- ✓ **Frequency inverter** as standard.
- ✓ **SOFT DRY** as standard.



## VERSATILITY

- ✓ **Make to order**: customization.  
Possibility to customize the machines from factory with the available options.
- ✓ **Wet Cleaning**  
Possibility to create different phases per program with its customized parameters.
- ✓ **EFFICIENT DRY**
- ✓ **OPL <-> Self-service**  
Standard OPL model easily transformable to coin laundry.



## MAINTENANCE

- ✓ **Hinged panel**  
Easy and ergonomic access to control panel parts.
- ✓ **Easy access to parts for reparability**  
Dryers are designed to offer an easier maintenance and repair.  
Example: rear panel in big capacity dryer.
- ✓ **Technical menu**  
Machine monitoring, machine error warning, management for telemetry and statistics.  
Remote desk and data recovery for technicians and maintenance, software update, etc.



## ERGONOMICS

- ✓ **Drawer as fluff filter**, made of stainless steel.
- ✓ **Big door diameters** Helpful for loading and unloading.
- ✓ **Ideal door height for ergonomic opening**
- ✓ **Opening direction of door adjustable on site** (models 11 to 36 kg).  
Opening sense can be changed just turning the front panel and adding a part (longer wire to be ordered).
- ✓ **Reversible door can be ordered for all dryers, factory fitted**
- ✓ **Optional:**  
New sliding door in 45 kg to 80 kg models.  
Automatic or manual operation.



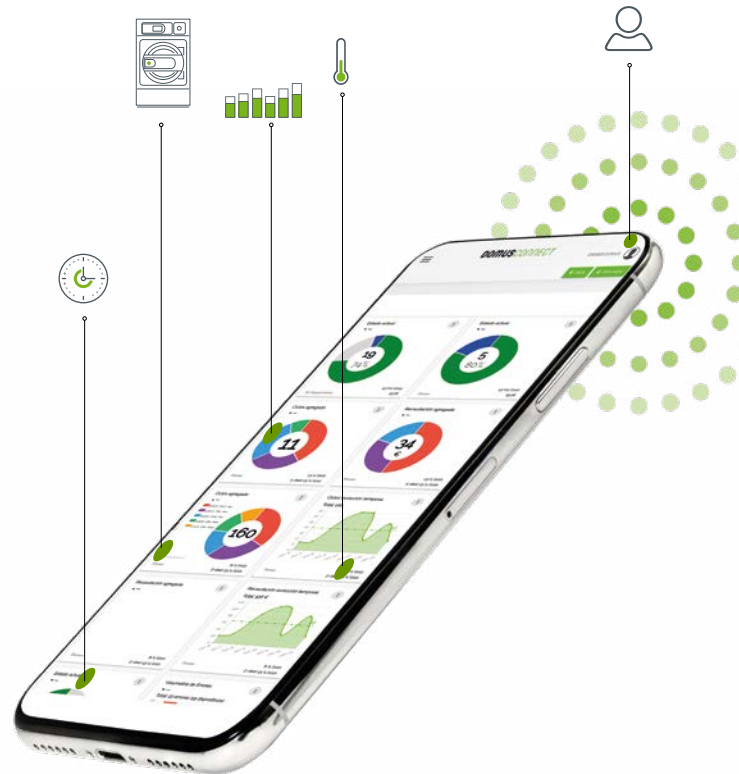
## EFFICIENCY

- ✓ **EFFICIENT DRY** Intelligent humidity control (includes new drum inlet temperature control).
- ✓ **AIR RE-CYCLE** Efficient air recirculation system. Short drying times, less energy consumption.
- ✓ **FULL FLOW** New "optimized" system of mixed airflow.
- ✓ **DOUBLE FLOW** Axial radial flow.
- ✓ **Big fluff filter**
- ✓ **Thermal insulation**
- ✓ **Optional:**  
LEMS by Onnera Pulse Concentrator.



## CONNECTIVITY

- ✓ **DOMUSCONNECT** - connectivity standard. Machine monitoring, machine error warning, management for telemetry and statistics. Remote desk and data recovery for technicians and maintenance, software update, etc.
- ✓ **NEW telemetry:** detailed data with dynamic and customisable graphs.
- ✓ **Management for laundries:** OPL and COIN  
Our DOMUS IoT solution allows you to manage your laundry business (i.e. create discount programs for customers, get statistics, telemetry and laundry monitoring).
- ✓ **LEMS by Onnera Pulse Concentrator**
- ✓ **Remote payment:** App for payments, cashless payment by scanning a QR code, promotions and machine booking.



# TOUCH II

The TOUCH II includes many features based on achieving more efficiency, versatility and connectivity.

## User friendly and totally programmable microprocessor

7" touch screen.  
Configuration of washing and spinning speed.  
Complete regulation of water levels.  
Regulable washing temperature from 20 °C to 90 °C.  
Standard Wet Cleaning system.

## Videos on display

Ads, instructions (useful for coin laundries).





## Dosing / vaporizing system

Offer your customers a premium experience by precisely managing the fragrance dosing in your dryers.



## Multilingual interface

Choose your preferred language to display on the TOUCH II screen from a wide and constantly expanding selection.

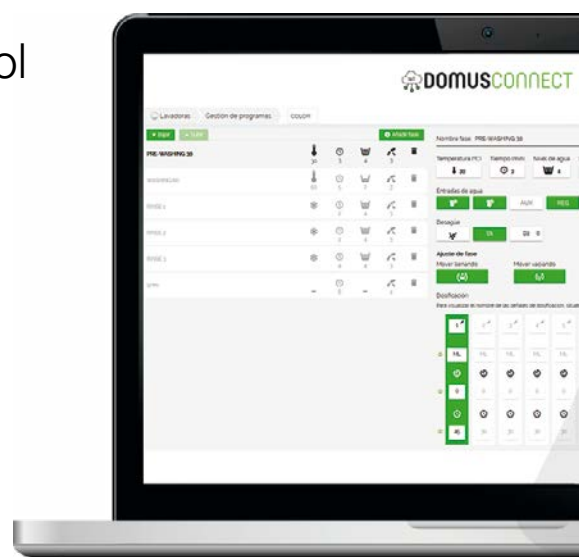


## DOMUSCONNECT:

### Maximum efficiency and real-time control

Discover the power of IoT connectivity, integrated for free in all machines with TOUCH II via Ethernet, for advanced and efficient management.

- ✓ Monitor telemetry and statistics in real time.
- ✓ Optimise the performance of your equipment.
- ✓ Ensuring MAXIMUM HYGIENE.
- ✓ Receive remote technical support.
- ✓ Update the software and much more.



## USB port

If you don't have an internet connection in your laundry, the USB port allows you to configure, update, and analyse the machines via this connection by downloading and uploading data.

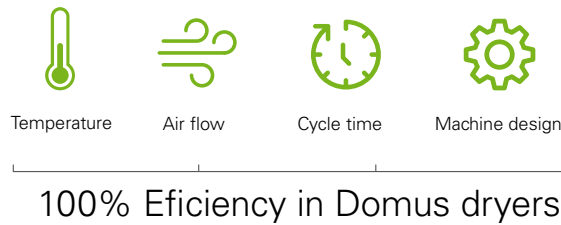


# EFFICIENCY

## ECOENERGY

A RANGE WITH ALL EFFICIENT FEATURES AS STANDARD

The new ECOEVOLUTION technology, especially in HEAT PUMP and ECOENERGY tumble dryers, offer a wide variety of standard efficient features to provide important energy savings.



### Air Re-Cycle

Efficient air recovery system. Short drying times, less energy consumption.

### Thermal insulation

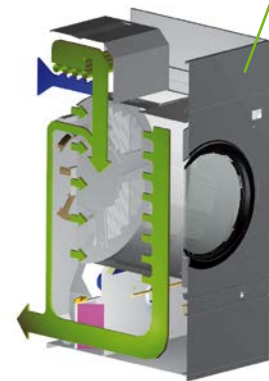
Insulated panels to avoid loss of heat.

### Efficient Dry

Intelligent humidity control (standard in ECO-ENERGY and as option in DYNAMIC).

### Drum inlet temperature control

A more accurate temperature control in the drum.



### Full Flow

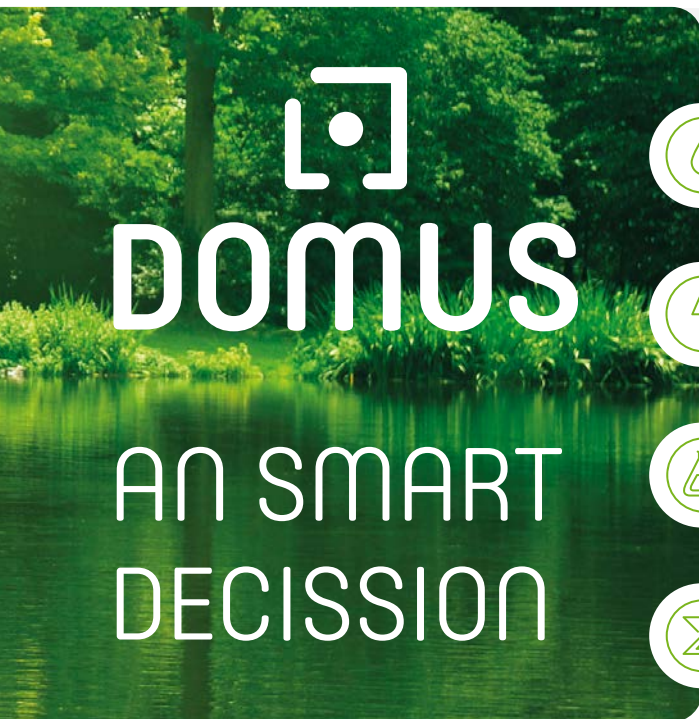
Optimized system of mixed airflow in ECO-ENERGY range.

### Double Flow

Axial radial airflow in DYNAMIC, COMFORT and ESSENTIAL ranges.

## In a laundry, the machines are the visible part of an iceberg.

At DOMUS we pay attention to the iceberg part that cannot be seen, to optimize the expenses during the whole Life Cycle Cost.



### Start saving with Domus in:



#### Water

We design our systems to ensure efficient water usage, preventing waste.



#### Energy

We optimise our machines to guarantee greater energy savings and maximise laundry efficiency.



#### Chemicals

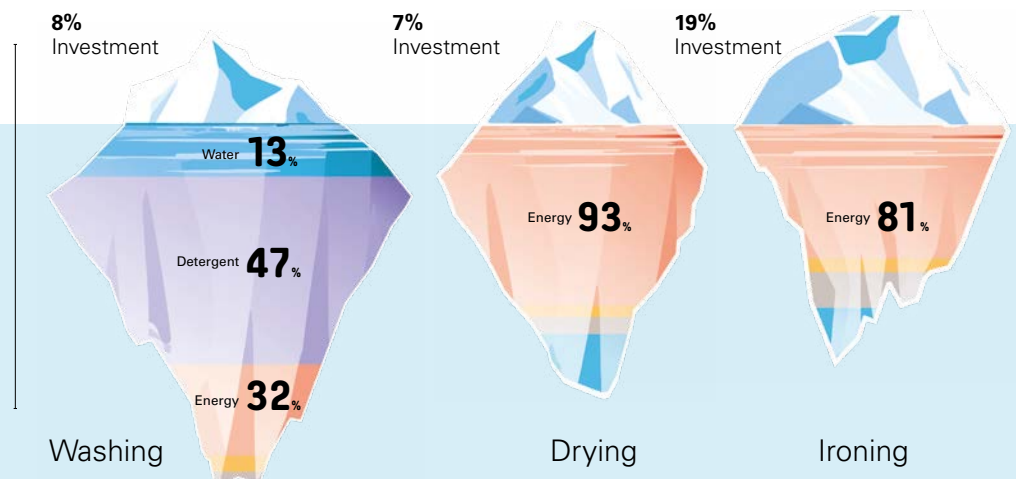
We design our washers and barriers with features that ensure the precise use of chemicals.



#### Time

We adjust process times, key in a laundry, to increase efficiency and business profitability.

Example of a standard laundry with 50% flat linen and 50% towelling, during the first 10 years of life.





# CONNECTIVITY

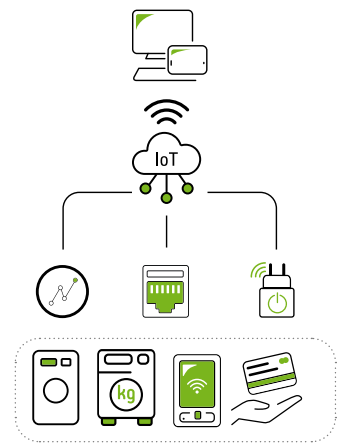
All DOMUS dryers with TOUCH II come with IoT connectivity as standard and free of charge, enabling full remote management to improve efficiency, control, and business operations.

## DOMUSCONNECT (IoT): the solution for your laundry

The Internet of Things (IoT) connects everyday objects to the internet, allowing real-time remote control and process optimisation.

DOMUSCONNECT is a free laundry management platform that takes IoT to its full potential, transforming the operations of your OPL or self-service laundry.

With this platform, you can increase efficiency, reduce costs, and enhance your customers' experience from anywhere.



## Main features of DOMUSCONNECT



### Accessible from any device

Manage your laundry from a computer, tablet, or smartphone.



### Free updates

Receive regular new features to keep your business at the forefront.



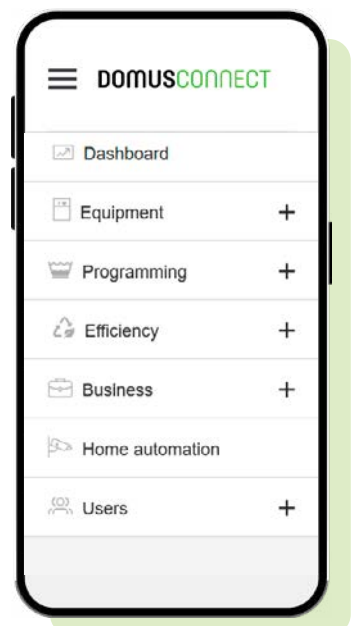
### Highly secure

Advanced security ensures the integrity and confidentiality of your data at all times.



### Available in multiple languages

Expanding continuously to suit your needs.



## What are the benefits for each profile?





### As an owner you can:

- Manage your business remotely, avoiding unnecessary travel.
- Use an intuitive interface to streamline operations.
- Access production reports, cycles, consumption, and revenue data.
- Ensure process control for washing and drying.
- Guarantee hygiene, disinfection, and quality in every cycle.





### For your self-service customer, they can:

- Make quick and secure payments via card (new), tokens, or the App.
-  • Enjoy personalised promotions.
-  • Check machine status in real time, avoiding waiting times.
- Operate with an intuitive, user-friendly interface..





### For service technicians:

- Provide remote assistance to minimise on-site visits.
-  • Access precise data via the new telemetry system to improve operations.
-  • Perform remote software updates to keep machines up-to-date..



### For chemical suppliers:

- Manage and create washing and drying programmes online.
-  • Control chemical dosing via RS-485.
-  • Monitor executed programmes in real time.



### As a distributor, you can:

- Leverage the platform to support new business ventures, manage leasing, maintenance contracts, and self-service setups.
- Access detailed databases of installed machines, geographical distribution, and models for efficient management.



# ECOSMART LAUNDRY

by DOMUS

## THE LAUNDRY OF THE FUTURE HAS ALREADY ARRIVED.

Domus latest generation, high-performance and connected equipment allows you to manage and monitor resource consumption in real time thanks to cutting-edge technology. Ideal for any type of business and sector.



### Add dryers with AIR RECYCLE and EFFICIENT DRY

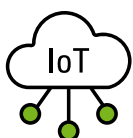
By adding Domus dryers to your **ECOSMART LAUNDRY**, you improve the efficiency and sustainability of your business. With innovations such as AIR RE-CYCLE and EFFICIENT DRY, each cycle is optimized to save energy and reduce drying times.





## LEMS by Onnera - Total control of consumption

With the new LEMS pulse concentrator and DOMUSCONNECT (IoT), you can retrieve all the data and analyze the efficiency of your washing machines and the ECOTANK XL such as water, energy and other resources of your industrial laundry.



## DOMUSCONNECT

The data collected by LEMS, added to other metrics and values of your laundry, are integrated into the DOMUSCONNECT platform, allowing you to monitor and control your business live and obtain **detailed management, hygiene and efficiency reports**.





# VERSATILITY

To adapt to the needs of the different businesses.

## OPL <> Self-service

Easy transformation from OPL to self-service, with various payment options available (see page 17).

## Wet Cleaning<sup>®</sup>

The best dryer for Wet Cleaning.

- ✔ Fully programmable control: possibility of programming in phases.
- ✔ Precise control of inlet and outlet temperatures.
- ✔ Exact programming of humidity.
- ✔ Adjustable drum speed.

## EFFICIENT DRY

Intelligent humidity control, which adapts the drum rotation speed to the humidity level at each drying phase (standard in ECO-ENERGY, optional in DYNAMIC).

## Make to order: customization

Possibility to customise the machine from factory with the available options.

## Various connection modes available

via pulses, with RS-485 protocol or via IoT.









# Payment options

Domus offers you maximum flexibility with **three payment systems that can be combined**, allowing you to choose one or more for your laundry or Clean&Move module. DOMUS dryers between 11 and 45 kg are specifically designed for use in self-service laundries

## 1 DOMUS LAUNDRY KIOSK

Optimise your laundry with contactless payments and remote control. Provide convenience and security for your customers while managing pricing and promotions from anywhere with DOMUSCONNECT.

-  Available in 12" and 32" screens.
-  Enables payments via card or smart device (NFC).
-  Create pricing plans and promotions.
-  Customise it by adding messages or videos.



## 2 Payment via App DOMUS LAUNDRY

Allows remote machine reservation and payment, helping to build customer loyalty with promotional offers. See page 12 for more details.



## 3 Payment with COIN / TOKEN

Washers and dryers can include coin/token payment systems in various currencies.



Click or tap the button to find out more details about payment options.





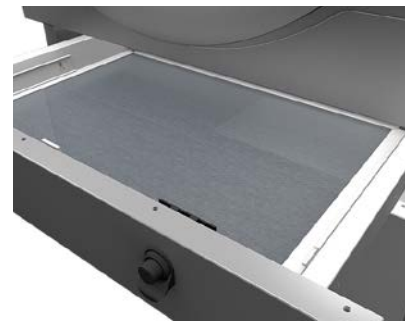
# ERGONOMICS

## Opening sense of the door adjustable on site

Opening sense can be easily changed in models 11 to 36 kg. It can also be ordered from factory.

## Biggest door diameters

Helpful for loading and unloading.



## Big fluff filter

Drawer with stainless steel grid, easy to open and clean.



We take care of you as well as your clothes and your business.



## Front tilt system

In DTT-45 to 80.



## Sliding door for an easy unloading and loading operation

Automatic and manual options.





# OUTSTANDING FEATURES

## Reversing drum action

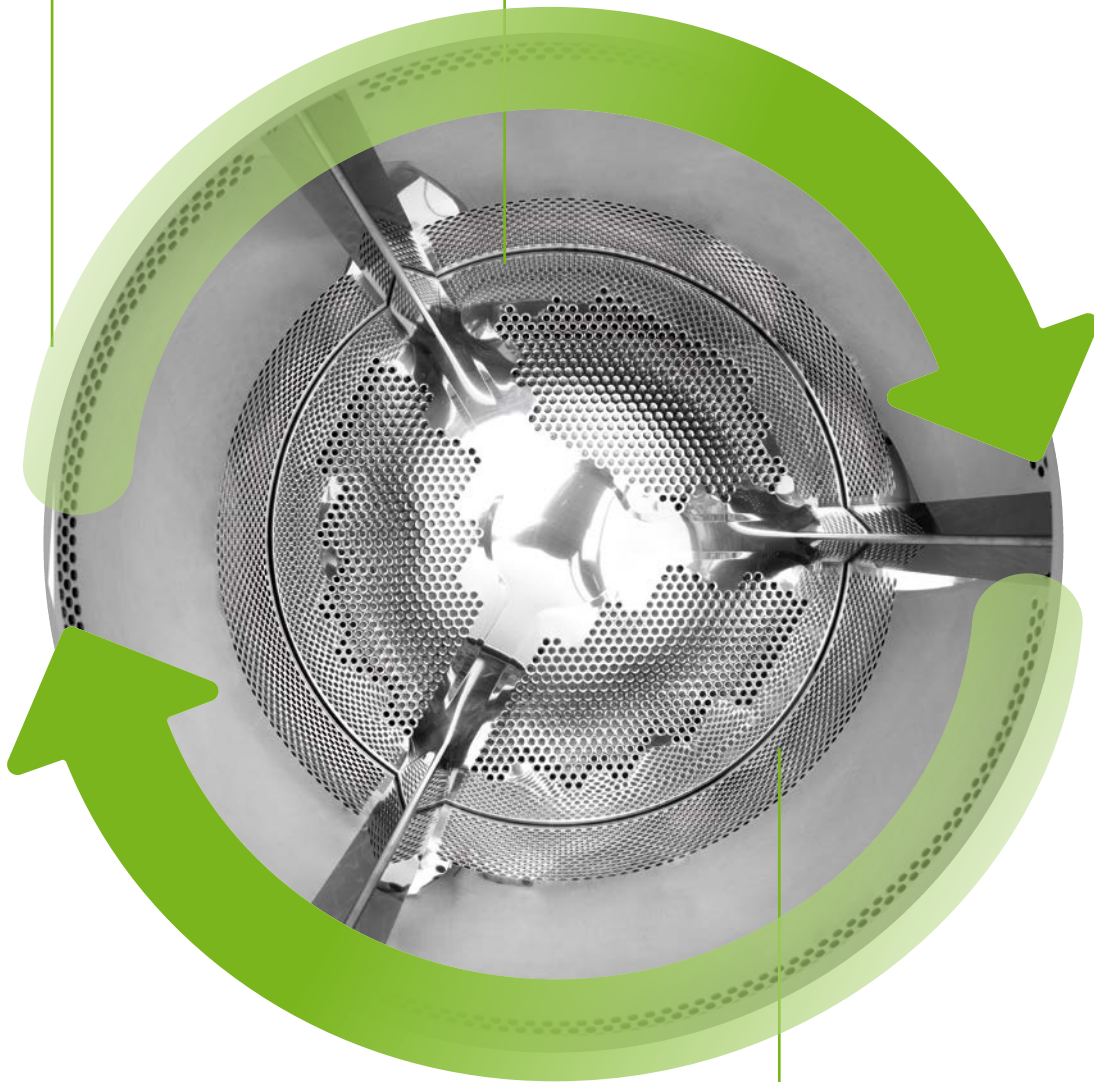
As standard

## Stainless steel drum

As standard except  
ESSENTIAL range

## Frequency inverter

As standard



## SOFT DRY

Stamped drum  
holes, to lengthen  
the linen lifetime



# MAINTENANCE

One of DOMUS concerns is to make life easier for our clients. That includes offering quality equipment and parts of reputed brands, which demand little maintenance.



## Easy access to parts

Dryers are designed to offer an easy maintenance and reparability.

## Hinged panel

Easy and ergonomic access to control panel parts.



## Technical menu

Machine monitoring, machine error warning, management for telemetry and statistics. Remote desk and data recovery for technicians and maintenance, software update, etc.

## Equivalent parts

Most key parts are the same for all models (contactors, electronic devices, gear...).



## Tumble dryers technical data

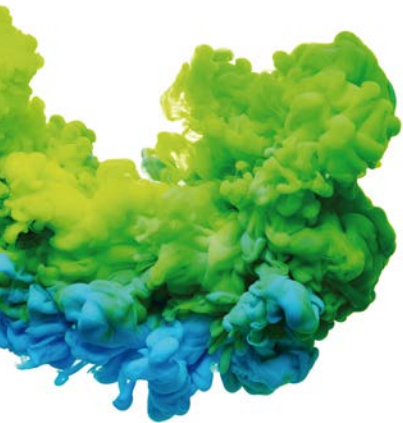
SINGLE POCKET		UNIT.	DTT/DTM/ DLM-11	DTT/DTM/ DLM-14	DTT/DTM/ DLM-18	DTT/DTM/ DLM-22	DTT/DTM/ DLM-28	DTT/DTM/ DLM-35	DTT/DTM-45	DTT/DTM-60	DTT/DTM-80
<b>CAPACITY &amp; DRUM</b>											
Capacity 1/18	Kg	11,7	15	18,3	24,4	30,6	36,7	50	66,7	83,3	
Capacity 1/20	Kg	10,5	13,5	16,5	22,0	27,5	33	45	60	75	
Ø Drum	mm	750	750	750	835	947	947	1.225	1.225	1.225	
Drum length	mm	475	610	746	800	780	936	760	1.020	1.252	
Drum volume	l	210	270	330	440	550	660	900	1.200	1.500	
Ø Door hole	mm	574	574	574	574	802	802	802	802	802	
Door center height	mm	976	976	976	1.030	1.040	1.040	1.275	1.275	1.275	
Height from floor to bottom of door	mm	618	618	618	672	578	578	813	813	813	
<b>ELECTRIC HEATING</b>											
Evaporation capacity ECO-ENERGY	L/h	11	14,5	14,9	20	26,8	31,5	45	64	68,2	
Evaporation capacity DYNAMIC-COMFORT-ESSENTIAL	L/h	9,3	13,5	14,10	17	26,1	31,5	40,2	60,2	64	
Hourly output ECO-ENERGY	Kg/h	21,7	29	30	40	51,6	63,9	90	128,6	136,4	
Hourly output DYNAMIC-COMFORT-ESSENTIAL	Kg/h	20,3	26,9	28,3	34	48,4	60	80,4	120	128,6	
Installed heating power	kW	12	18	18	24	30	36	54	72	72	
Installed electrical power ECO-ENERGY	kW	12,97	18,97	18,97	25,17	31,35	37,35	57	75,35	75,75	
Installed electrical power DYNAMIC-COMFORT-ESSENTIAL	kW	12,67	18,67	18,67	24,97	31,15	37,15	55,9	74,25	74,65	
Drum motor power	kW	0,37	0,37	0,37	0,37	0,55	0,55	0,75	1,10	1,50	
<b>GAS HEATING</b>											
Evaporation capacity ECO-ENERGY	L/h	15	15,6	16,3	22,3	31,8	34,7	48,2	72	93,8	
Evaporation capacity DYNAMIC-COMFORT-ESSENTIAL	L/h	14,5	15,4	16,3	20	30,9	32,1	42,5	65,8	86,5	
Hourly output ECO-ENERGY	Kg/h	31,3	32,5	33,6	44,6	61,1	73,3	96,4	144	187,5	
Hourly output DYNAMIC-COMFORT-ESSENTIAL	Kg/h	28,6	30,3	31,9	40	59,3	63,9	84,4	128,6	173,1	
Installed gas heating power	kcal/h	17638	17638	17638	26655	35276	35276	51591	77386	103181	
Installed gas heating power	kW	20,51	20,51	20,51	31	41	41	60	90	120	
Installed electrical power ECO-ENERGY	kW	0,97	0,97	0,97	1,17	1,35	1,35	3	3,35	3,75	
Installed electrical power DYNAMIC-COMFORT-ESSENTIAL	kW	0,67	0,67	0,67	0,97	1,15	1,15	1,9	2,25	2,65	
<b>STEAM HEATING</b>											
Installed steam heating power	kW	30	30	30	49,2	50,1	50,1	91	128	128	
Installed electrical power ECO-ENERGY	kW	0,97	0,97	0,97	1,17	1,35	1,35	3	3,35	3,75	
Installed electrical power DYNAMIC-COMFORT-ESSENTIAL	kW	0,67	0,67	0,67	0,97	1,15	1,15	1,9	2,25	2,65	
<b>VENTILATION</b>											
Fan motor power ECO-ENERGY	kW	0,55	0,55	0,55	0,75	0,75	0,75	2,2	2,2	2,2	
Fan motor power DYNAMIC-COMFORT-ESSENTIAL	kW	0,25	0,25	0,25	0,55	0,55	0,55	1,1	1,1	1,1	
Ø Fume exhaust	mm	200	200	200	200	200	200	300	300	300	
<b>HEAT EMISSION</b>											
Maximum total heat emission ECO-ENERGY	kW	0,96	1,44	1,44	1,92	2,4	2,88	3,78	5,04	5,04	
Maximum total heat emission DYNAMIC-COMFORT-ESSENTIAL	kW	1,2	1,8	1,8	2,4	3	3,6	4,86	6,48	6,48	
Max. front heat emission ECO-ENERGY	kW	0,60	0,90	0,90	1,20	1,50	1,80	1,08	1,44	1,44	
Max. front heat emission DYNAMIC-COMFORT-ESSENTIAL	kW	0,84	1,26	1,26	1,68	2,1	2,52	2,16	2,88	2,88	
<b>NET DIMENSIONS / DIMENSIONS WITH PACKING</b>											
Net / gross width	mm	785 / 865	785 / 865	785 / 865	890 / 970	985 / 1.065	985 / 1.065	1.270 / 1.330	1.270 / 1.330	1.270 / 1.330	
Net / gross depth	mm	855 / 940	989 / 1.074	1.125 / 1.210	1.255 / 1.345	1.054 / 1.154	1.210 / 1.310	1.106 / 1.185	1.366 / 1.455	1.598 / 1.705	
Net / gross height (*without heating)	mm	1.694 / 1.840	1.694 / 1.840	1.694 / 1.840	1.812 / 1.940	1.975 / 2.080	1.975 / 2.080	2.380 /*2.200	2.380 /*2.200	2.380 /*2.200	
Net / gross weight	Kg	172 / 180	180 / 190	187 / 200	210 / 230	230 / 260	260 / 285	395 / 430	529 / 575	657 / 715	
<b>OTHERS</b>											
Sound level	dB	64	64	64	65	65	65	67	67	67	

## Tumble dryers technical data

DOUBLE POCKET: STACK	UNIT.	DTT2-11 XP/DTM2-11 XP/ DLM2-11 XP		DTT2-14 XP/DTM2-14 XP/ DLM2-14 XP		DTT2 -18 XP/DTM2 -18 XP/ DLM2-18 XP		DTT2-22 XP/DTM2-22 XP/ DLM2-22 XP	
<b>CAPACITY &amp; DRUM</b>									
Capacity 1/18 (each drum)	Kg	11,7 x2	15 x2	18,3 x2	24,3 x2				
Capacity 1/20 (each drum)	Kg	10,5 x2	13,5 x2	16,5 x2	21,9 x2				
Ø Drum	mm	750	750	750	835				
Drum length	mm	475	610	746	800				
Drum volume	l	210	270	330	440				
Ø Door hole	mm	574	574	574	575				
Door center height	mm	547 / 1.522	547 / 1.522	547 / 1522	547 / 1.618				
Height from floor to bottom of door	mm	189 / 1.164	189 / 1.164	189 / 1.164	214 / 1.258				
<b>ELECTRIC HEATING</b>									
Evaporation capacity	L/h	27 (13,5 x2)	29 (14,5 x2)	30 (15,5 x2)	-				
Hourly output	Kg/h	54 (27 x2)	58 (29 x2)	60 (30 x2)	-				
Installed heating power	kW	12 x2	18 x2	18 x2	-				
Installed electrical power	kW	31,34	37,34	37,34	-				
Drum motor power	kW	0,37 x2	0,37 x2	0,37 x2	0,37 x2				
<b>GAS HEATING</b>									
Evaporation capacity	L/h	28 (14 x2)	30 (15 x2)	31 (15,5 x2)	44 (22 x2)				
Hourly output	Kg/h	56 (28 x2)	60 (30 x2)	62 (31 x2)	88 (44 x2)				
Installed gas heating power	kW	20,5 x2	20,5 x2	20,5 x2	30,4 x2				
Installed electrical power	kW	1,34	1,34	1,34	1,94				
<b>VENTILATION</b>									
Fan motor power	kW	0,25 x2	0,25 x2	0,25 x2	0,55 x2				
Ø Fume exhaust	mm	200 x2	200 x2	200 x2	250 x2				
<b>HEAT EMISSION</b>									
Maximum total heat emission	kW	2,6	2,6	2,6	2,6				
Max. front heat emission	kW	1,8	1,8	1,8	1,9				
<b>NET DIMENSIONS / D. WITH PACKING</b>									
Net / gross width	mm	785 / 865	785 / 865	785 / 865	870 / 950				
Net / gross depth	mm	1.001 / 1.084	1.135 / 1.218	1.275 / 1.354	1.312 / 1.395				
Net / gross weight	Kg	260 / 268	275 / 293	290 / 317	373,5 / 388,5				
<b>OTHERS</b>									
Sound level	dB	64	64	64	69				

	UN TAMBOR				DOBLE TAMBOR - STACK			
	ECO-ENERGY	DYNAMIC	COMFORT	ESSENTIAL	DYNAMIC	COMFORT	ESSENTIAL	
	TOUCH II	TOUCH II	M	M	TOUCH II	M	M	
Touch II	X	X	-	-	X	-	-	
IoT – DOMUSCONNECT	X	X	-	-	X	-	-	
M Electronic programmer	-	-	X	X	-	X	X	
Autoreverse drum	X	X	X	X	X	X	X	
Inverter	X	X	X	X	X	X	X	
Outer casing in grey skinplate	X	X	X	-	X	X	-	
White coated external panels	-	-	-	X	-	-	X	
Stainless Steel drum	X	X	X	-	X	X	-	
Galvanized drum	-	-	-	X	-	-	X	
SOFT DRY	X	X	X	X	X	X	-	
DOUBLE FLOW (Axial+Radial)	-	X	X	X	X	X	X	
FULL FLOW (Optimized axial+radial Flow)	X	-	-	-	-	-	-	
EFFICIENT DRY intelligent moisture control + temperature sensor	X	OPT.	-	-	OPT.	-	-	
AIR RECYCLE (Air recycling system)	X	-	-	-	-	-	-	
THERMAL INSULATION - Insulated panels	X	-	-	-	-	-	-	
Double door glass	X	OPT.	OPT.	-	OPT.	OPT.	-	
SFEX	X	OPT.	-	-	OPT.	-	-	
Dosing/Vaporising system (softeners/perfumes)	OPT.	OPT.	-	-	OPT.	-	-	
Drum Inlet Temperature control	X	OPT. with EFFICIENT DRY	-	-	OPT. with EFFICIENT DRY	-	-	

\*DOMUS reserves the right to modify the technical data without notice.



# DOMUS

C. Energia, 12 - Pol. Ind. La Quintana  
08504 Sant Julià de Vilatorra  
BARCELONA (SPAIN)

## SALES DEPARTMENT

T. +34 93 888 71 53  
M. +34 649 482 730  
domus@domuslaundry.com  
export@domuslaundry.com

## AFTER SALES DEPARTMENT

T. +34 93 888 76 73  
sat@domuslaundry.com

## PARTS DEPARTMENT

T. +34 93 888 76 83  
parts@domuslaundry.com



[WWW.DOMUSLAUNDRY.COM](http://WWW.DOMUSLAUNDRY.COM)

