



HEAVY PROFESSIONAL LAUNDRY

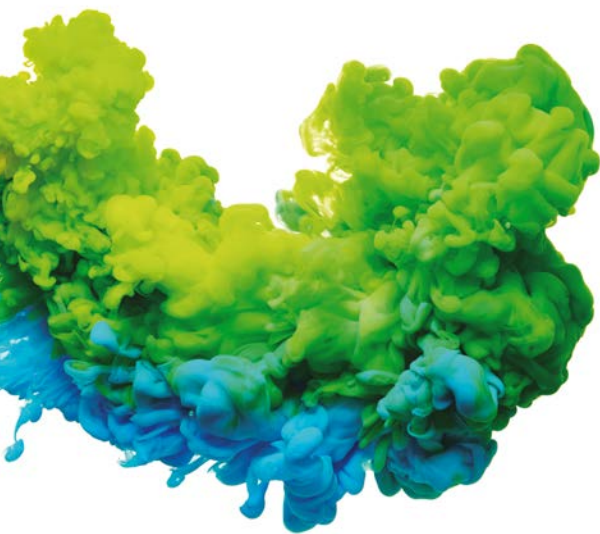
2025

Heavy Professional Laundry

Heavy Professional Laundry, specifically designed for your own business. A range tailored to meet the needs of your professional activity.

Heavy Professional Laundry is DOMUS' answer to the needs of a different client. A customer that demands equally robust, programmable, efficient and environmentally friendly machines, like the industrial models. The machines offer identical benefits but with greater versatility, a more manageable size and a more affordable price. Perfectly equipped to give you a quality, fast, flexible and economic service. Just the one you need.

Welcome to Heavy Professional Laundry.





HPW - HEAVY PROFESSIONAL WASHERS | G-Factor 450

CONTROL TYPE	HEATING	CAPACITY			
		8 kg		10 kg	
TOUCH II Programmable Control	Electric - HW	Valve HPW-8 V TOUCH II	Pump HPW-8 P TOUCH II	Valve HPW-10 V TOUCH II	Pump HPW-10 P TOUCH II



HPD - HEAVY PROFESSIONAL TUMBLE DRYERS

CONTROL TYPE	HEATING	CAPACITY	
		8 kg	10 kg
TOUCH II Programmable Control	Electric Gas	HPD-8 TOUCH II E HPD-8 TOUCH II G	HPD-10 TOUCH II E HPD-10 TOUCH II G
ELECTRONIC CTRL M	Electric Gas	HPD-8 M E HPD-8 M G	HPD-10 M E HPD-10 M G
ELECTRONIC CTRL M	Electric Gas		HPDL-10 M E TRIF. HPDL-10 M E MONO. HPDL-10 M G
New TOUCH II Programmable Control	Heat pump	HPD-8 TOUCH II HPI New	HPD-10 TOUCH II HPI New

Heating codes
 E = ELECTRIC
 HW = HOT WATER
 G = GAS
 HPI = HEAT PUMP

Drain Codes
 V = VALVE
 P = PUMP

NOTE: All models can be easily converted to self-service, with a self-service kit, token kit or for central pay, etc.



HPW washer extractors

- ✔ High spin washer extractor. Soft mounted.
- ✔ G-FACTOR 450.
- ✔ Grey skinplate body. AISI 304 Stainless steel drum and tub.
- ✔ Detergent manual dispenser with 4 compartments.
- ✔ 8 signals for automatic liquid dosing, programmable in time and delay.
- ✔ 2 water inlets (hot and cold).
- ✔ TOUCH II microprocessor with touchscreen.
- ✔ **DOMUSCONNECT: the IoT solution easy and free to manage the laundry, monitor machines, etc. from the cloud.**
- ✔ Model with drain valve and model with drain pump.
- ✔ Valve models especially designed for washing mops.
- ✔ Leveling feet included.
- ✔ CE and WRAS approved.



HPD tumbre dryers

- ✓ Heavy professional tumble dryers 8 and 10 kg.
- ✓ Robust construction, grey skinplate panels. White painted panels for HPDL-10 M model.
- ✓ Industrial aluminium door with large diameter.
- ✓ TOUCH II microprocessor models, 4,3" touchscreen, programmable.
- ✓ Digital M programmer.
- ✓ **DOMUSCONNECT: the IoT solution easy and free with TOUCH II to manage the laundry, monitor machines, etc. from the cloud.**
- ✓ Versatile machine, same model for self-service and OPL.
- ✓ Stackable on top of a HPW washer or on another HPD dryer, with control panels between both drums (except HPDL-10 M model).
- ✓ Electric heating with two possible configurations: 4.5 or 6.75 kw.
- ✓ Gas heated models both with TOUCH II and M.



4⁺ STRENGTHS



OUTSTANDING FEATURES

- ✓ **High G-Factor 450.**
- ✓ Two controls available:
 - **TOUCH II microprocessor:** easy to use, fully programmable, 4.3" touch screen and IoT connectivity.
 - **M programmer:** time and temperature selection, easy to use and versatile.
- ✓ **8 dosing signals as standard.**
- ✓ **USB port:** configure, update and analyse machines without internet connection.
- ✓ **NEW telemetry:** detailed data with dynamic and customisable graphs.
- ✓ **Wet Cleaning** standard with the TOUCH II.
- ✓ **DOMUSCONNECT** - Standard and free IoT connectivity with the TOUCH II.
- ✓ **Versatile payment systems:** up to three combinable options between.
- ✓ **Short wash cycles:** heating power 6 kW.
- ✓ **OPTIONS**
 - ✓ Silicone gasket, delayed opening in case of electric power cut, normally closed valve, maritime voltage.



EFFICIENCY

- ✓ **Intelligent weighing system.**
- ✓ **Optimal Loading:** standard in all washers, for manual indication of the load weight.
- ✓ **Plinth for water recovery:** with tank included.
- ✓ **Plinth for mops** (filter included) only valve models.
- ✓ **High G-Factor 450**
 - Reduced residual moisture > reduced drying time.



VERSATILITY

- ✓ **OPL <> Self-service**
 - Standard model easily transformable.
- ✓ **Electric <> Hot water**
 - Standard Electric model easily transformable to hot water model.
- ✓ **Pump <> Drain valve**
 - Standard model easily transformable.
 - Easy access and service.
- ✓ **Single <> Stacked**
 - Standard model easily stackable with a dryer.
- ✓ **All models prepared for the Wet Cleaning system**
- ✓ **Suitable for many sectors:** Restaurants, gyms, campings, mop cleaning, apartments, self-service laundries, dry cleaners, nurseries...



ROBUSTNESS

- ✓ **Outer casing in grey skinplate.**
- ✓ **Robust aluminium door.**
- ✓ **AISI 304 Stainless steel** made inner drum, outer drum and ribs.
- ✓ **No inner drum seal (muffle):** easy to repair and clean.
- ✓ **Industrial house bearing and bearings** (up to 15.000 working hours) and possibility to replace bearings.
- ✓ **Same motor and inverter as industrial washers.**
- ✓ **Industrial and heavy duty doorlock.**
- ✓ **OPTION**
 - Stainless Steel AISI-304 panels.

OUTSTANDING FEATURES



DOMUSCONNECT:

Maximum efficiency and real-time control

Discover the power of IoT connectivity, integrated for free in all machines with TOUCH II via Ethernet, for advanced and efficient management.

- ✓ Monitor telemetry and statistics in real time.
- ✓ Optimise the performance of your equipment.
- ✓ Ensuring MAXIMUM HYGIENE.
- ✓ Receive remote technical support.
- ✓ Update the software and much more.



TOUCH II Programmable Microprocessor

4.3" touchscreen display.
Wash and spin speed configuration.
Full regulation of water levels.
Wash temperature adjustable from 20°C to 90°C.
Standard Wet Cleaning system.



USB port

If you don't have an internet connection in your laundry, the USB port allows you to configure, update, and analyse the machines via this connection by downloading and uploading data.

High G-Factor reduces residual moisture and drying time

The higher the G-Factor in washing machines, the more water is extracted and the less residual moisture in the clothes.

Videos on screen

Advertisements, instructions (useful for self-service).



Short Wash Cycles

Heating Power 6 kW.



EFFICIENCY



Pulse concentrator



LEMS by Onnera

Track the consumption of your washers and dryers with the new LEMS metering system integrated into the DOMUSCONNECT platform.



Low water consumption

A standard washing program consumes less than 8,2 litres of water per kg and cycle.

Water saving

Possibility of configuring three levels of savings.

Water recovery plinth

As an option. Includes tank.



Mop plinth includes filter

As an option and only for models with valve.



Optimal Loading

Manual indication of weight.

High G-Factor 450 for high spin machines

Intelligent consumption

Automatic adjustment of water and soap (standard).



VERSATILITY

To adapt to the needs of the different businesses.

OPL < > Self-service

Standard models easily transformable with coin/token kits.

Electric < > Hot water

Standard electric models easily transformable to hot water models.

Drain valve < > Pump

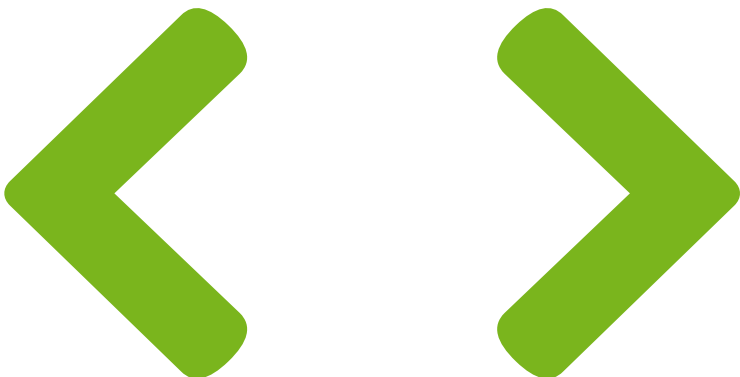
Standard models easily transformable. Easy access and service.

All washers have all features to use Wet Cleaning programs



Unit < > Stacked

The washing machine allows for stacking a dryer on top.



ROBUSTNESS

Exterior cabinet in grey skinplate

Industrial-grade bearing support and bearings

Cabinet in stainless steel AISI-304 (optional)

Without muffle
Easier to repair and clean.

Same motor and inverter as industrial washing machines

Robust, industrial door lock

Sturdy aluminum door

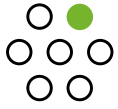
Drum, tub, and paddles

Made of stainless steel AISI-304.





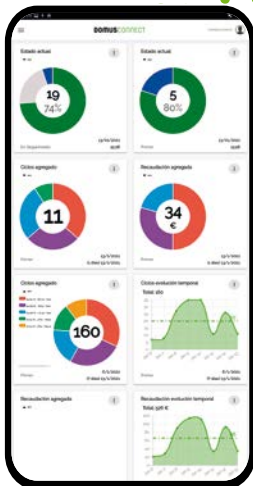
4⁺ STRENGTHS



OUTSTANDING FEATURES

- ✓ **Two controls available:**
 - **TOUCH II microprocessor:** easy to use, fully programmable, 4.3" touch screen and IoT connectivity.
 - **M programmer:** time and temperature selection, easy to use and versatile
- ✓ **DOMUSCONNECT** - Standard and free IoT connectivity.
- ✓ **NEW telemetry:** detailed data with dynamic and customisable graphs.
- ✓ **USB port:** configure, update and analyse machines without internet connection.
- ✓ **Reduced drying times** (less than 45 minutes). 6,75 kw heating, option 4,5 kw. ESSENTIAL model only 4,5 kw.
- ✓ **OPTIONS**
Multiple options: plinth, humidity sensor, etc.

Nuevo



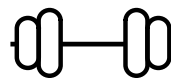
EFFICIENCY

- ✓ **New range: HEAT PUMP MODELS.**
- ✓ **EFFICIENT DRY:** humidity sensor (only with TOUCH II).
- ✓ **Optimised airflow.**
- ✓ **Wide fluff filter.**
- ✓ **Efficient design.**



VERSATILITY

- ✓ **OPL <> Self-service**
Standard models can be programmed as OPL or self-service laundry version, central pay, etc.
- ✓ **Single <> Stacked**
Models can be stacked on top of a washer or on another dryer. Control panel can be assembled in a lower side and lower panel on the top for better ergonomics using a dryer stacked with a washer.
- ✓ **Ideal for multiple solutions:** hotels, hostels, campings, self-service laundries, facility services (mops), gyms, etc.
- ✓ **New gas heated models both with TOUCH II and M.**



ROBUSTNESS

- ✓ **Outer casing in grey skinplate:** White painted panels in HPDL-10 model.
- ✓ **Robust aluminium big door**
- ✓ **Drawer as fluff filter.**
Not in the door but a specific drawer.
- ✓ **Industrial fan and powerful airflow.**
- ✓ **Sturdy construction of the dryer structure and panels.**

OUTSTANDING FEATURES



DOMUSCONNECT:

Maximum efficiency and real-time control

Discover the power of IoT connectivity, integrated for free in all machines with TOUCH II via Ethernet, for advanced and efficient management.

- ✔ Monitor telemetry and statistics in real time.
- ✔ Optimise the performance of your equipment.
- ✔ Ensuring MAXIMUM HYGIENE.
- ✔ Receive remote technical support.
- ✔ Update the software and much more.



TOUCH II Programmable Microprocessor

- 4.3" touchscreen display.
- Wash and spin speed configuration.
- Full regulation of water levels.
- Wash temperature adjustable from 20°C to 90°C.
- Standard Wet Cleaning system.



USB port

If you don't have an internet connection in your laundry, the USB port allows you to configure, update, and analyse the machines via this connection by downloading and uploading data.

M programmer

Use the buttons to control temperature and time.





EFFICIENCY



Pulse concentrator LEMS by Onnera

New system to control actual consumption and turn your laundry into an ECOSMART LAUNDRY. Discover the savings you can achieve here:



Reduced drying cycles

Less than 45 minutes.
6.75 kW heating, 4.5 kW option.

Improved airflow system

EFFICIENT DRY

Humidity sensor (available only with TOUCH II).

Efficient design

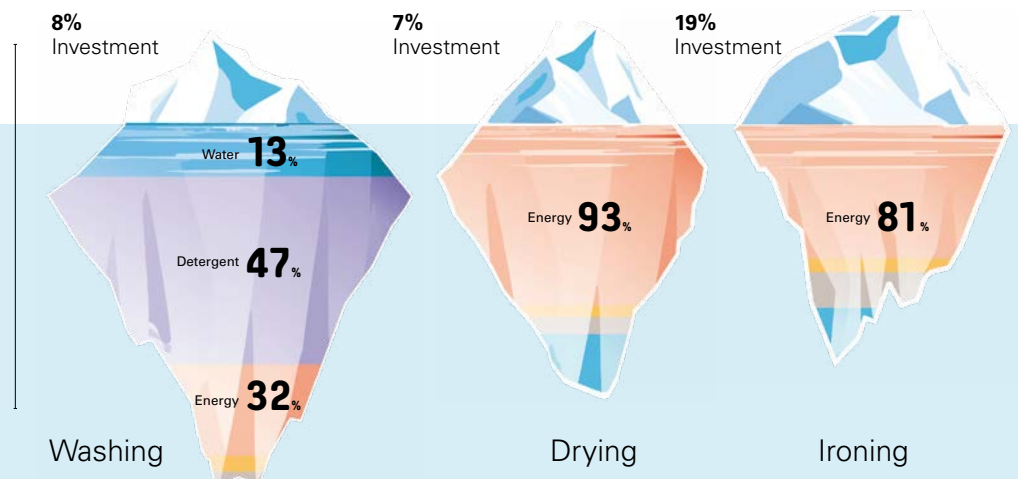
Big fluff filter



In a laundry, the machines are the visible part of an iceberg.

At DOMUS we pay attention to the iceberg part that cannot be seen, to optimize the expenses during the whole Life Cycle Cost.

Example of a standard laundry with 50% flat linen and 50% towelling, during the first 10 years of life.





VERSATILITY

To adapt to the needs of the different businesses.

OPL <> Self-service

Easy transformation from OPL to self-service.

Gas models with the TOUCH II microprocessor and M programmer

Unit <> Stacked

Reversible control panel: The control panel can be mounted at the bottom for better ergonomics when using a stacked dryer on top of a washer.

Control panels can be mounted between the two drums for better ergonomics and easy use (except for the ESSENTIAL model).

Ideal for many sectors

Hotels, campgrounds, self-service laundromats, gyms, etc.



ROBUSTNESS

Exterior cabinet in grey skinplate

White lacquered panels on HPDL10 model.

Stronger construction for the frame and panels

Cabinet and drum in stainless steel (optional)

Industrial fan

With a powerful airflow

Sturdy aluminum door

Lint filter drawer

Not in the door but in a specific drawer



New

HEAT PUMP TUMBLE DRYERS

Versatile

Suitable for many businesses.

OPL laundries: spa, hairdresser's, apartments, and many small businesses.

Vended: self-service laundries

Wet Cleaning shops

Easy to transform, for any sector

Easy installation

✓ No extraction

Heavy professional heat pump dryers do not need exhaust to the exterior.

No need of refrigeration water.

✓ Compact dimensions

Heat pump set in the plinth.

✓ Low consumption

The heat pump dryer consumes 1/5 of the installed power compared to an electric equivalent dryer.

Electrical panel with lower power required.

Multitension 230/400V 50/60 Hz.

The HEAT PUMP RANGE is unique in features and efficiency.

Easy operation

Ergonomics.

Short drying times.

Reverse drum action standard.

Humidity control standard.

Wide environmental temperature range: 6°C to 46°C.

Easy maintenance

Easy front access to heat pump set

In the plinth.

No need of refrigeration water, no maintenance.

Type of gas: R-410A.



ECOENERGY

**ELECTRIC
DRYER**

18 kW

Low power

The heat pump dryer consumes 1/5 of the installed power compared to an electric equivalent dryer.

Efficient

It uses less than 0,5 kw/litre of evaporated water.

Optimized cycle time

Full load of
100% cotton towels

Professional dryer → **70 minutes**

**HPI
DRYER**

3,95 kW

**Direct
Savings**



60% load, 50% polyester
50% cotton towels

Professional dryer → **35 minutes**



OPL APPLICATIONS

ESPECIALLY DESIGNED FOR YOUR BUSINESS

HAIRDRESSERS

WET CLEANING

GYM

COUNTRY HOUSES / HOSTELS

BED & BREAKFAST

SPA

BEAUTY SALONS

FACILITY SERVICES (MOPS)

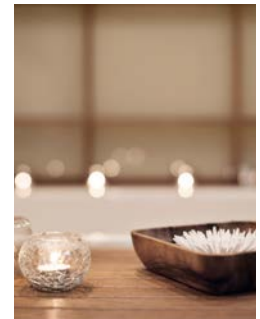
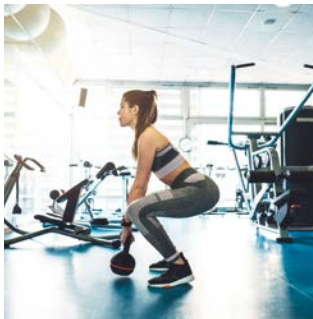
CARE HOMES

LABORATORIES

CLINICS

NURSERIES

SMALL INDUSTRIES



SELF SERVICE APPLICATIONS

DESIGNED FOR EASY CONVERSION FROM OPL TO SELF-SERVICE

SELF-SERVICE
LAUNDRIES

COLLEGES & UNIVERSITIES

CLEAN + US FOR HOTELS

APARTMENTS

CAMPINGS

HOSTELS





COMMUNITIES



Payment options

1 DOMUS LAUNDRY KIOSK

Optimise your laundry with contactless payments and remote control. Provide convenience and security for your customers while managing pricing and promotions from anywhere with DOMUSCONNECT.

-  **Available in 12" and 32" screens.**
-  **Enables payments via card or smart device (NFC).**
-  **Create pricing plans and promotions.**
-  **Customise it by adding messages or videos.**



2 Payment via App DOMUS LAUNDRY

Allows remote machine reservation and payment, helping to build customer loyalty with promotional offers. See page 12 for more details.




3 Payment with COIN / TOKEN

Washers and dryers can include coin/token payment systems in various currencies.





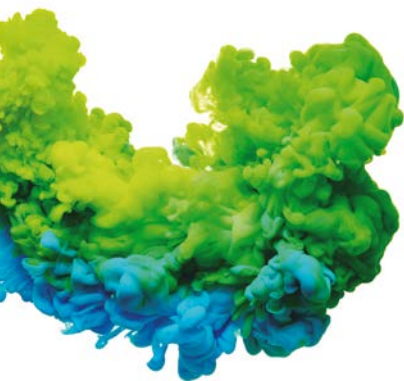
Click or tap the button to discover more details about payment systems.

Heavy professional washer extractors

 HEAVY PROFESSIONAL WASHERS		UNIT.	HPW-8 V	HPW-8 P	HPW-10 V	HPW-10 P
DRUM						
Load capacity 1:9 / 1:10	Kg		9/8	9/8	11/10	11/10
Volume	l		80	80	100	100
Diameter	mm		532	532	532	532
Depth	mm		360	360	425	425
GENERAL DETAILS						
Washing speed - Spining speed	r.p.m.		50 / 1.250	50 / 1.250	50 / 1.250	50 / 1.250
G FACTOR	-		450	450	450	450
Maximum force transmitted	KN		1,47 ± 0,53	1,47 ± 0,53	1,57 ± 0,53	1,57 ± 0,53
Frequency-dynamic force	Hz		18,33	18,33	18,33	18,33
Self-service laundry version	-		Yes	Yes	Yes	Yes
Double drain	-		Yes	No	Yes	No
Noise level	dB		<70	<70	<70	<70
Weighing system / Tilting system	-		No/No	No/No	No/No	No/No
DOOR						
Height center door - Height base door	mm		537 / 280	537 / 280	537 / 280	537 / 280
Diameter	mm		373	373	373	373
POWER						
Motor	kW		0,75	0,75	0,75	0,75
Electric heating power	kW		6	6	6	6
Total electric pwr (electric model)	kW		6,25	6,25	6,25	6,25
Total electric power (hot water model)	kW		0,75	0,75	0,75	0,75
DIMENSIONS / PACKING DIMENSIONS						
Width	mm		680 / 710	680 / 710	680 / 710	680 / 710
Depth	mm		698 / 832	698 / 832	742 / 832	742 / 832
Height	mm		1.040 / 1.130	1.040 / 1.130	1.040 / 1.130	1.040 / 1.130
Net weight - Gross weight	kg		140 / 150	140 / 150	150 / 160	150 / 160

Heavy professional tumble dryers

 HEAVY PROFESSIONAL DRYERS 		UNIT.	HPD-8	HPD-10	HPDL -10	HPD-08 HPI	HPD-10 HPI
CAPACITY & DRUM							
Capacity 1:20	Kg		8	10	10	8	10
Volume	l		160	200	200	160	200
Drum Ø	mm		590	590	590	590	590
Drum depth	mm		585	690	690	585	690
DOOR							
Height center door	mm		554	554	554	918	918
Height base door	mm		320	320	320	684	684
Door Ø	mm		480	480	480	480	480
GENERAL DETAILS							
M control			Electronic	Electronic	Electronic	No	No
TOUCH II Control			Touchscreen 4,3"	Touchscreen 4,3"	N/A	Touchscreen 4,3"	Touchscreen 4,3"
USB connection. Only with TOUCH II			Yes	Yes	No	Yes	Yes
Construction			Skinplate panels	Skinplate panels	Skinplate panels	Skinplate panels	Skinplate panels
Plinth			OPT	OPT	No	HP	HP
Self-service laundry version			Yes	Yes	Yes	Yes	Yes
Noise level	dB		62	62	62	61	61
POWER							
Motor	kW		0,37	0,37	0,37	0,37	0,37
Electric heating	kW		4,92 / 7,17	4,92 / 7,17	4,5	2,85	2,85
Gas heating	kW		7	7	7	No	No
CONSUMPTIONS							
Electric heating	kW		4,5 / 6,75	4,5 / 6,75	4,5	No	No
Average propane gas consumption	kg/h		0,45	0,45	0,45	No	No
Average natural gas consumption	m3/h		0,46	0,46	0,46	No	No
OTHERS							
Fume exhaust Ø	mm		100	100	100	No	No
Maximum airflow	m3/hour		300	300	300	-	-
DIMENSIONS / PACKING DIMENSIONS							
Width	mm		680 / 710	680 / 710	680 / 710	680 / 710	680 / 710
Depth	mm		722 / 832	775 / 832	775 / 832	722 / 832	775 / 832
Height	mm		1.056 / 1.141	1.056 / 1.141	1.056 / 1.141	1.408 / 1.520	1.408 / 1.520
Net weight - Gross weight	kg		89 / 101	93 / 104	93 / 104	245 / 260	250 / 265



DOMUS

C. Energia, 12 - Pol. Ind. La Quintana
08504 Sant Julià de Vilatorra
BARCELONA (SPAIN)

SALES DEPARTMENT

T. +34 93 888 71 53
M. +34 649 482 730
domus@domuslaundry.com
export@domuslaundry.com

AFTER SALES DEPARTMENT

T. +34 93 888 76 73
sat@domuslaundry.com

PARTS DEPARTMENT

T. +34 93 888 76 83
parts@domuslaundry.com



WWW.DOMUSLAUNDRY.COM

