



BARRIER WASHER EXTRACTORS

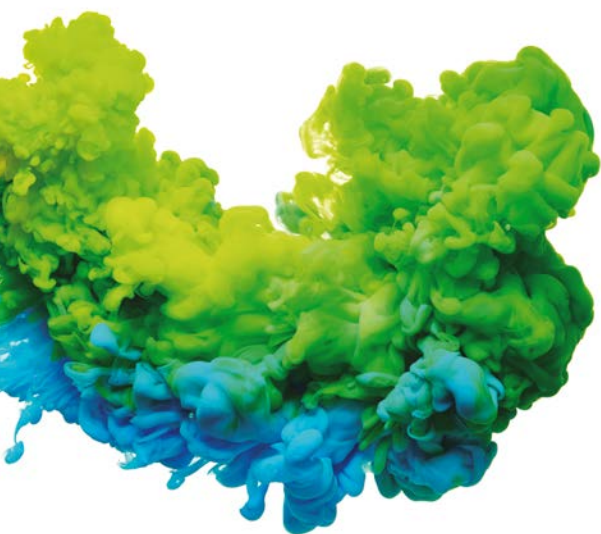
2025

Power, control and total disinfection

The strict sanitary rules RABC require powerful machines with specific washing processes for hospitals, care homes, pharmaceutical, nuclear and cosmetic industries, etc.

DOMUS range of barrier washers outstand for its advanced technology, ergonomics and safety features. With capacities from 16 to 100 kg; they are perfect to adapt to the needs of this very specific and demanding market. Installed between two separate areas, they avoid any contact between dirty (infectious) linen and clean linen, as well as any type of re-contamination during the process. At the same time, its ergonomic design allows to work in an efficient way, which increases production in a high percentage.

We offer several ranges, all of them with TOUCH II microprocessor: 7" screen, DOMUSCONNECT and many other features to ensure EFFICIENCY and MAXIMUM HYGIENE.



ECOVOLUTION

by DOMUS



MEDICAL BARRIER WASHERS | ASM 180°

CONTROL TYPE	HEATING	CAPACITY	
		16 kg	22 kg
TOUCH II Programmable Control	Electric, HW + steam	ASM-16 TOUCH II	ASM-22 TOUCH II



BARRIER WASHERS | DHB

CONTROL TYPE	HEATING	HEATING			
		27 kg	35 kg	50 kg	70 kg
TOUCH II Programmable Control	Electric, steam, electric + steam	DHB-27 TOUCH II	DHB-35 TOUCH II	DHB-50 TOUCH II	DHB-70 TOUCH II
TOUCH II Programmable Control	Electric, steam, electric + steam	DHB-27 TOUCH II PULLMAN OPTION	DHB-35 TOUCH II PULLMAN OPTION	DHB-50 TOUCH II PULLMAN OPTION	DHB-70 TOUCH II



BARRIER WASHERS | PULLMAN

CONTROL TYPE	HEATING	HEATING
		100 kg
TOUCH II Programmable Control	Electric and steam	ASA-100 TOUCH II PULLMAN

HIGH SPIN



ASM

- ✓ Pass-through barrier washer extractors with 2 opposed doors (180°) with sanitary separating frame.
- ✓ Models of 16 and 22 kg.
- ✓ G Factor 350.
- ✓ TOUCH II Microprocessor with a 7" touch screen.
- ✓ **DOMUSCONNECT - standard IoT connectivity.**
- ✓ Two water inlets.
- ✓ Outer casing in skinplate, top stainless steel.
- ✓ Central drain.
- ✓ Automatic positioning of drum.
- ✓ Heating: electric, steam.
Model dual heating (electric + steam).



DHB

- ✓ Pass-through barrier washers, with 2 opposed doors (180°), soft mounted.
- ✓ Models of 27, 35, 50 and 70 kg. G Factor 375.
- ✓ TOUCH II Microprocessor with a 7" touch screen.
- ✓ **DOMUSCONNECT - standard IoT connectivity.**
- ✓ Double display standard.
- ✓ Models of 27, 35, 50 and 70 kg. G Factor 375.
- ✓ TOUCH II Microprocessor with a 7" touch screen.
- ✓ Panels in grey skinplate and top panel in stainless steel.
- ✓ Drum and vat in stainless steel AISI 304.
- ✓ Three water inlets.
- ✓ Central drain.
- ✓ Automatic positioning of drum, with motor brake standard.
- ✓ Heating: electric, steam or dual.
- ✓ Pullman drum option.

HIGH SPIN



PULLMAN

- ✔ Pass-through barrier washer - Pullman partition, soft mounted.
- ✔ 100 kg. model. G Factor 325.
- ✔ TOUCH II Microprocessor with a 7" touch screen.
- ✔ DOMUSCONNECT - standard IoT connectivity.
- ✔ Double display standard.
- ✔ Three water inlets.
- ✔ External panels in skinplate and top in stainless steel.
- ✔ Drum and vat in stainless steel AISI 304.
- ✔ Central drain.
- ✔ Automatic positioning of drum, with motor brake standard.
- ✔ Heating: electric, steam.
- ✔ Dual heating as option (electric + steam).

ECOENERGY



TOUCH II

- ✓ **TOUCH II:** Easy-to-use microprocessor, fully programmable with a 7" touchscreen and IoT connectivity.
- ✓ **DOMUSCONNECT: standard and free IoT connectivity.**
- New** ✓ **New telemetry:** detailed data with dynamic and customisable graphs.
- ✓ **Multilingual interface.**
- ✓ **Control of detergent dosing:** 8 standard signals and 6 extra as an option.
- ✓ **Screen on both sides of the machine.**
- ✓ **USB port:** configure, update, and analyse machines without internet connection.
- ✓ **Wet Cleaning ready.**



OUTSTANDING FEATURES

- ✓ **Automatic positioning of drum** with motor brake to make loading and unloading operations easier (as option in ASM models).
- ✓ **3 water inlets as standard** (2 water inlets in ASM range).
- ✓ **Wet Cleaning:** equipped with all features to use Wet Cleaning programs (useful in nursing homes).
- ✓ Side panels in skinplate and top panel in stainless steel, **easy to clean.**
- ✓ **Dual heating electric-steam model - energy savings**
- ✓ **OPTIONS**
 - Detergent box kit (instead of pumps).
 - 2nd drain valve for water recovery.
 - Titration valve.
 - UPS kit to release drum brake in case of power failure.
 - AISI 304 stainless steel outer casing.



ERGONOMICS

- ✓ **Huge doors** opening making loading and unloading operation easier, biggest opening in the market.
- ✓ **User-friendly drum opening by push button**
- ✓ Standard height of loading (door base at 800 mm).
- ✓ **OPTIONS**
 - Plinth to align loading height (door base at 850 mm).



CONNECTIVITY

DOMUSCONNECT - connectivity standard.

- ✓ **Remote technical service:** machine monitoring, error warning, remote desk and data recovery for technicians and maintenance, software updates.
- ✓ **Management for laundries:** Our DOMUS IoT solution allows you to manage your laundry business (get statistics, telemetry and laundry monitoring).
- ✓ **Pulse concentrator by Onnera.**



EFFICIENCY

- ✓ **WATER SAVING:** Possibility of configuring three levels of savings.
- ✓ **OPTIMAL LOADING:** manual indication of weight.
- ✓ **Intelligent Consumption:** automatic adjustment of water and soap consumptions (standard).
- ✓ **Ready to be connected to the ECOTANK XL and ECOTANK tanks.**
- ✓ **High G Factor.**
Reduced residual moisture > reduced drying time
- ✓ **Low water consumption.**
- ✓ **OPTIONS**
Automatic weighing system on feet.
LEMS pulse concentrator by Onnera.



MAINTENANCE

- ✓ **Electric components on the left side, mechanic components on the right side, connections on the top**
Easy access to all the components
Easier to connect, all connections protected from water and detergents
- ✓ **Central drain** easy installation
- ✓ **Technical menu:** Statistics, alarms, autotest, data recovery for technicians and maintenance
- ✓ **OPTIONS**
Side drain.
Low steam pressure: to enable installation of steam.
heated washer with very low pressure of steam on site.



TOUCH II

Programmable microprocessor

Connectivity, telemetry and efficiency are the most outstanding features on TOUCH II.

TOUCH II: User-friendly and fully programmable microprocessor

7" touch screen.

Wash and spin speed setting.

Complete regulation of water levels.

Adjustable water temperature from

20 °C to 90 °C degrees.

Wet Cleaning as standard.

7" screen on both sides

Touch control in the dirty zone and information display in the clean zone to show wash status and warnings.

✓ Standard on DHB and ASA.

✓ Optional on ASM.



Multilingual interface

Choose your preferred language from a wide and constantly expanding selection.

New

NEW Telemetry

Remote, real-time monitoring to optimise machine performance with DOMUSCONNECT.

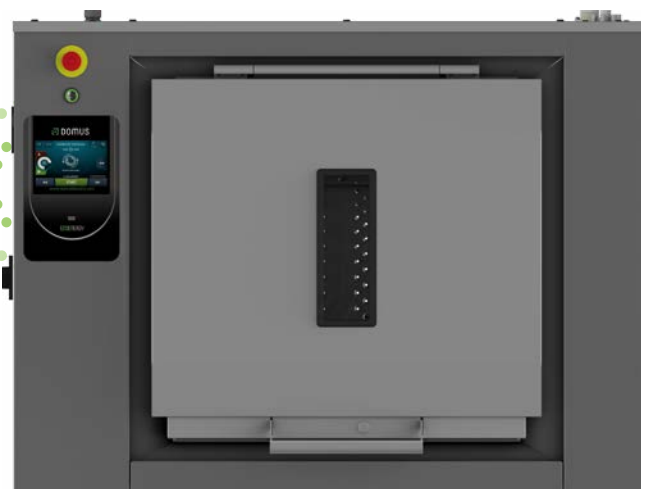
Includes 8 standard dosing signals, expandable with 6 additional options.

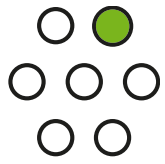


Wet Cleaning

An ideal system for care homes, enabling delicate and efficient washing.

✓ Precise configuration of water levels, speed, and temperature for each cycle.





OUTSTANDING FEATURES



Automatic positioning of the drum

Standard, with motor brake to make loading and unloading operations (as option in ASM models).

Pullman partition

Optimises load balance in large barrier washers, preventing weight accumulation on one side and ensuring efficient and safe spinning.

- ✓ Standard in ASA.
- ✓ Optional in DHB-27, 35 an 50.

3 water inlets

Standard in DHB and ASA (third inlet as option in ASM models).



Weighing system

It brings great water, chemicals and energy savings, especially with partial loads, as it adjusts water and chemicals to the real load.

Option available in ASM and DHB ranges.

Outer casing in skinplate

And top panel in stainless steel, easy to clean. As option, AISI 304 stainless steel outer casing.

Other options

- Detergent box kit (instead of pumps).
- Dual heating electric - steam: energy savings.
- 2nd drain valve for water recovery.
- Titration valve.



EFFICIENCY

New



Pulse concentrator LEMS by Onnera

New system to control actual consumption and turn your laundry into an **ECOSMART LAUNDRY**. Discover the savings you can achieve here:



Weighing system

It brings great water, chemicals and energy savings, especially with partial loads, as it adjusts water and chemicals to the real load. Option, not available in ASA.

Water Saving

Possibility of configuring three savings levels.



Water recovery tanks

DOMUS sanitary barriers with TOUCH II control and double drainage can be connected to the ECOTANK XL and ECOTANK water recovery tanks, which allows significant water and energy savings.

ECOTANK XL

Large capacity tanks

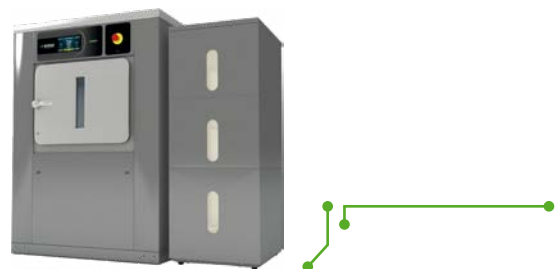
Designed to store up to **1000 litres**, allowing to save large volume of water.



ECOTANK

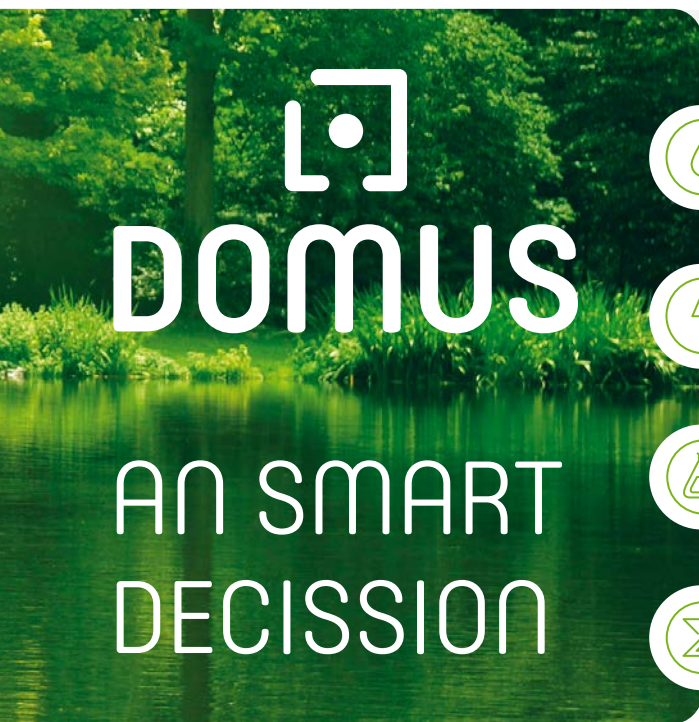
80 and 150 litre tanks

to save a lot of water in small spaces.



**In a laundry,
the machines are the visible part of an iceberg.**

At DOMUS we pay attention to the iceberg part that cannot be seen, to optimize the expenses during the whole Life Cycle Cost.



Start saving with Domus in:

Water

We design our systems to ensure efficient water usage, preventing waste.

Energy

We optimise our machines to guarantee greater energy savings and maximise laundry efficiency.

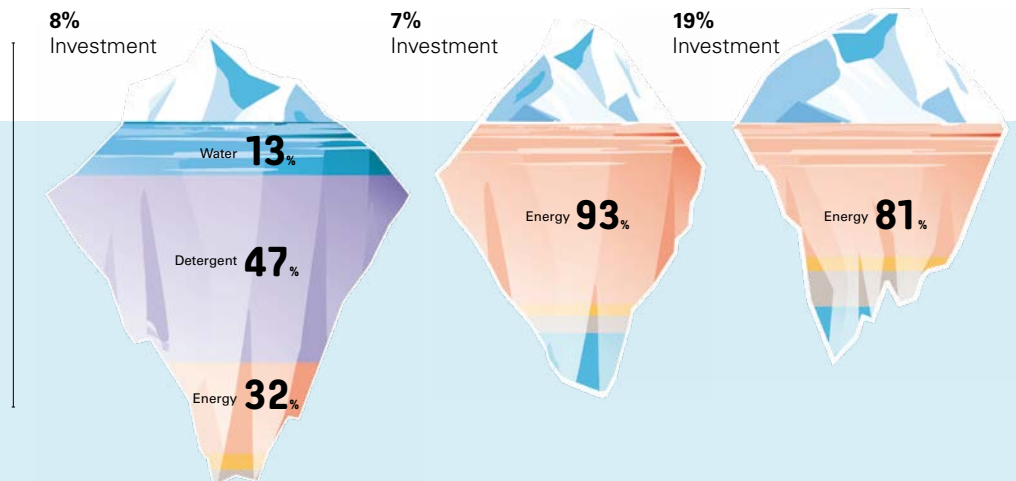
Chemicals

We design our washers and barriers with features that ensure the precise use of chemicals.

Time

We adjust process times, key in a laundry, to increase efficiency and business profitability.

Example of a standard laundry with 50% flat linen and 50% towelling, during the first 10 years of life.





ERGONOMICS

Health and safety at work are crucial for Domus. Our machinery is designed to offer an optimal user experience, ensuring maximum comfort and reducing physical effort.



User friendly drum opening by push button

Wide door opening

Facilitates loading and unloading operations, enhancing market possibilities.

Large doors:

DHB-27	542 x 650 mm
DHB-35/50	700 x 650 mm
DHB-70	1402 x 650 mm
ASA-100	960 x 700 mm

Ergonomic loading height

Door base at 800 mm, with the option to add pedestals to level up to 850 mm (except ASA).





CONNECTIVITY



As an owner you can:

- Manage your business remotely, avoiding unnecessary travel.
- Use an intuitive interface to streamline operations.
- Access production reports, cycles, consumption, and revenue data.
- Ensure process control for washing and drying.
- Guarantee hygiene, disinfection, and quality in every cycle.



For service technicians:

- Provide remote assistance to minimise on-site visits.
- New • Access precise data via the new telemetry system to improve operations.
- New • Perform remote software updates to keep machines up-to-date..



For chemical suppliers:

- Manage and create washing and drying programmes online.
- New • Control chemical dosing via RS-485.
- New • Monitor executed programmes in real time.



As a distributor, you can:

- Leverage the platform to support new business ventures, manage leasing, maintenance contracts, and self-service setups.
- Access detailed databases of installed machines, geographical distribution, and models for efficient management.





MAINTENANCE

One of DOMUS concerns is to make life easier for our clients. That includes offering quality equipment and parts of reputed brands, which demand little maintenance.

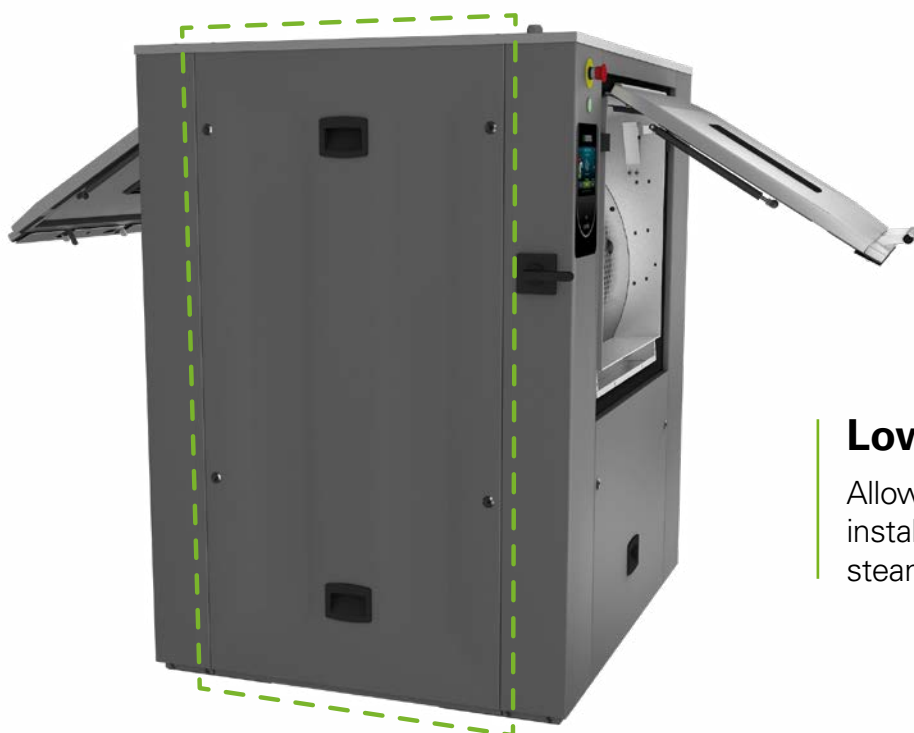
Easy access to components

Electric components on the left side, mechanic components on the right side, connections on the top.

- ✓ Easy access to all the components.
- ✓ Easier to connect, all connections protected from water and detergents.

Technical menu

Statistics, alarms, autotest, data recovery for technicians and maintenance.




Low steam pressure

Allows the steam washer to be installed in facilities with very low steam pressure.

Central drain

Easy installation. Standard double valve in ASA and optional for ASM and DHB ranges.

Technical data

 MEDICAL RANGE		UNIT.	ASM-16 TOUCH II	ASM-22 TOUCH II	DHB-27 TOUCH II	DHB-35 TOUCH II	DHB-50 TOUCH II	DHB-70 TOUCH II	ASA-100 TOUCH II
DRUM									
Load capacity 1:9	Kg	18	24,5	30	38,8	54,3	77,7	100	
Load capacity 1:10	Kg	16	22	27	35	49	70	90	
Volume	l	158	220	266	347	489	694	900	
Diameter	mm	633	633	800	800	800	800	1050	
Depth	mm	500	700	530	690	974	1380	1032	
Drum compartments	N°	1	1	1	1	1	2	2	
GENERAL DETAILS									
Washing speed	r.p.m.	45	45	45	45	45	45	45	
Spining speed	r.p.m.	1000	1000	920	920	920	920	750	
G Factor	-	350	350	375	375	375	375	325	
Double drain	-	OPT	OPT	OPT	OPT	OPT	OPT	STD	
TOUCH II Screen	-	7"	7"	7"	7"	7"	7"	7"	
Double display	-	OPT	OPT	STD	STD	STD	STD	STD	
Electric brake	-	OPT	OPT	STD	STD	STD	STD	STD	
Plinth of height	-	OPT	OPT	OPT	OPT	OPT	OPT	N/A	
3 water inlets	-	OPT	OPT	STD	STD	STD	STD	STD	
DOOR									
Drum opening dimensions	mm	400x315	400x315	480x515	640x515	640x515	2x(640x515)	900x500	
Vat opening dimensions	mm	455x415	455x415	542x650	700x650	700x650	1.402x650	960x700	
Height base door	mm	670	670	800	800	800	800	960	
POWER									
Motor	kW	2,2	2,2	4	4	5,5	7,5	15	
Heating (Electric / dual model)	kW	12	18	18	27	36	45	60	
Max. power (Electric model)	kW	14,2	20,2	22	31	41,5	52,5	75	
Max. power (Steam model)	kW	2,2	2,2	4	4	5,5	7,5	15	
CONNECTIONS									
Water inlet	inch	3/4"	3/4"	3/4"	3/4"	1"	1"	1"	
Steam inlet	inch	3/4"	3/4"	3/4"	3/4"	3/4"	3/4"	3/4"	
Drain	inch	3"	3"	3"	3"	3"	3"	3"	
Compressed air inlet	mm	N/A	N/A	N/A	N/A	N/A	N/A	8	
DIMENSIONS									
Width	mm	1.056	1.256	1.264 (1.416)	1.422 (1.574)	1.717 (1.869)	2.124 (2.276)	1.742 (1.894)	
Depth	mm	1.082	1.082	1.195	1.195	1.195	1.195	1.468	
Height	mm	1.382 (1.426)	1.382 (1.426)	1.615	1.615	1.615	1.615	1.982	
Net weight	Kg	438	471	886	926	1.063	1.190	1.900	
PACKING DIMENSIONS									
Width	mm	1.072	1.262	1.464	1.608	1.903	2.310	1.890	
Depth	mm	1.102	1.102	1.300	1.300	1.300	1.300	1.540	
Height	mm	1.530	1.530	1.720	1.720	1.720	1.720	2.150	
Gross weight	Kg	459	494	906	946	1.085	1.220	1.958	
Volume	m ³	1,81	2,13	3,27	3,60	4,26	5,17	6,26	

*DOMUS reserves the right to modify the technical data without notice.



DOMUS

C. Energia, 12 - Pol. Ind. La Quintana
08504 Sant Julià de Vilatorrada
BARCELONA (SPAIN)

SALES DEPARTMENT

T. +34 93 888 71 53
M. +34 649 482 730
domus@domuslaundry.com
export@domuslaundry.com

AFTER SALES DEPARTMENT

T. +34 93 888 76 73
sat@domuslaundry.com

PARTS DEPARTMENT

T. +34 93 888 76 83
parts@domuslaundry.com



WWW.DOMUSLAUNDRY.COM

